

# Lighting Solutions Guide for the Utilities Industry Professional

Plant Operations  
Transmission & Distribution  
Natural Gas & Pipelines  
Wind Energy



**2016**



**STREAMLIGHT**



# TOUGH JOBS DEMAND TOUGH LIGHTS

**The work you do every day is important.** It's also tough, dirty, grueling, and even dangerous. You know that having the right tools on-hand make your job easier, allowing you to be more productive. They also can play a major part in keeping you safe.

That's why it's critical to choose the right lighting tool. Streamlight understands this, which is why we make a variety of lights to meet your needs, with attributes you're looking for, whether it's size, weight, beam distance or safety ratings. Features available in our different lights include:

- Safety-ratings for hazardous atmospheres
- Waterproof/water-resistant products
- Different functions, including TEN-TAP® Programming, strobe and lower power modes
- Brightness, range and peripheral illumination
- Long or flexible run times
- Rechargeable options
- Durable materials – from the light's housing to the lens material
- Ergonomic designs for maximum comfort
- LEDs that won't break or burn out
- Various sizes to fit the job – from smaller pocket lights and headlamps to handheld lanterns
- Limited lifetime warranty

## TEN-TAP® Programming for Flexible Lighting Options

Streamlight makes flashlights for a wide variety of applications, but we understand that not everyone wants the same lighting options. Do you like most of the features of a flashlight, but not the pre-set programs? With our TEN-TAP® Programming, you can reprogram the light from the standard default option. Reprogramming is easy and can be done from anywhere – with just a few quick taps of the switch you can change the lighting to fit your needs and how you'll be using it.

With those lights that feature TEN-TAP Programming, you can choose from three user-selectable programs. Programming options will differ depending on the model of the light you have, so please refer to the product information and instructions for more information on your specific model.

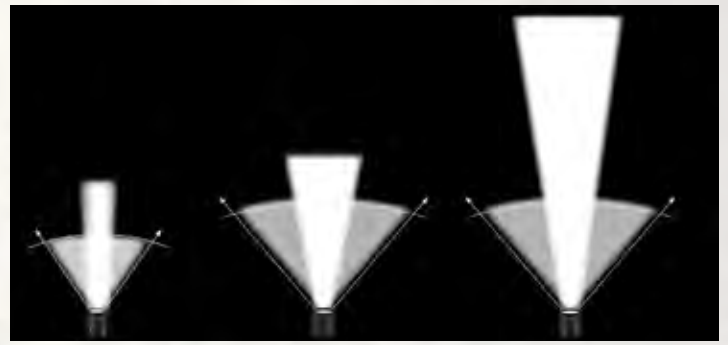
<i>Flashlight Applications and Beam Patterns</i>	<i>Pg 3</i>
<i>Safety Ratings Defined</i>	<i>Pg 4</i>
<i>Safety Rated Lighting Tools</i>	<i>Pgs 5</i>
<i>Plant Operations</i>	<i>Pgs 6-19</i>
<i>Transmission &amp; Distribution</i>	<i>Pgs 20-25</i>
<i>Natural Gas &amp; Utility</i>	<i>Pgs 26-31</i>
<i>Wind Energy</i>	<i>Pgs 32-35</i>
<i>Accessories</i>	<i>Pgs 36-37</i>
<i>Personalize Your Lights</i>	<i>Pg 39</i>

**Streamlight products make great safety awards!** We offer hot stamping, pad printing and laser engraving on most of our products. Contact your local Streamlight sales representative for more information.

For more information on the lights featured in this brochure, please visit [www.streamlight.com](http://www.streamlight.com), or contact your Streamlight sales representative.

## Flashlight Applications and Beam Patterns

Having the right flashlight that meets your lighting needs is important. That's one of the reasons Streamlight developed three series of lights: Tradition, High Lumen (HL) and High Performance, High Lumen (HPL). Each series offers a different balance of features and can be used for a variety of applications.



Tradition Series

HL Series

HPL Series

Meant for general, multi-purpose use, these lights are designed for the broadest range of lighting applications at the best value.

	Performance Characteristics	Typical Uses	Examples of Products
<b>Tradition Series</b>	<ul style="list-style-type: none"> <li>Optimal balance of candela and lumens</li> <li>Longest regulated run times</li> </ul>	<ul style="list-style-type: none"> <li>Day-to-day industrial use</li> <li>Maintaining vehicles</li> <li>General contracting work</li> </ul>	<ul style="list-style-type: none"> <li>Stinger® LED</li> <li>PolyStinger® LED</li> <li>Strion® LED</li> </ul>
Gives you maximum illumination, providing full situational awareness by delivering extraordinary brightness in a wide beam pattern. These lights are ideal for smaller areas where you need a lot of light, but not an exceptionally long reach.			
<b>High Lumen (HL)</b>	<ul style="list-style-type: none"> <li>High lumen beam</li> <li>Maximum illumination</li> <li>Good level of candela</li> </ul>	<ul style="list-style-type: none"> <li>Wherever you want wide scene illumination, while still being small enough to fit in your pocket</li> <li>Searching a dark room</li> </ul>	<ul style="list-style-type: none"> <li>Stinger LED HL®</li> <li>Strion LED HL®</li> <li>ProTac HL®/ ProTac HL® USB</li> <li>ProTac HL® 3/ProTac HL® 4</li> </ul>
Ideal for down-range applications requiring optimal beam reach, as these flashlights throw light a long distance.			
<b>High Performance High Lumen (HPL)</b>	<ul style="list-style-type: none"> <li>High-candela beam</li> <li>Delivers long-range lighting</li> <li>Sheds a bright peripheral beam</li> <li>More light on your target at a distance</li> </ul>	<ul style="list-style-type: none"> <li>See all the way to the end of a dark alley or down a wooded path</li> <li>Inspecting utility lines from the ground</li> <li>Down-range illumination</li> </ul>	<ul style="list-style-type: none"> <li>Stinger® HPL™</li> <li>Strion® HPL™</li> </ul>

## Headlamp Beam Patterns

There are times when you need both hands to complete a task so a headlamp is the best lighting tool to have in the moment. As stated above, having the right flashlight that meets your lighting needs is important. Streamlight offers several headlamps from which to choose to best meet your requirements.

Double Clutch USB - spot or flood beams

ProTac HL Headlamp - high lumen beam

Septor - soft flood beam

Argo - long-range beam

Trident - combination of distance and flood beams





# SAFETY RATINGS DEFINED

The National Electric Code (NEC) defines hazardous locations by “CLASS” and “DIVISION.” There are three classes:

**CLASS I** locations are made hazardous by the presence of flammable gases, liquids or vapors.

**CLASS II** locations are hazardous because combustible dusts are present.

**CLASS III** locations contain easily ignitable fibers or flyings.

The “DIVISION” designation refers to the likelihood that ignitable concentrations of flammable materials are present. There are two Divisions:

**DIVISION 1** designates an environment where ignitable concentrations of flammable gases, liquids, vapors or dusts can exist some of the time or all of the time under normal operating conditions, or where easily ignitable fibers and flyings are manufactured, handled or used.

**DIVISION 2** locations are where ignitable concentrations are not likely to exist under normal operating conditions or where Class 3 materials are stored or handled.

Hazardous classes are further defined by “GROUPS” based on the physical properties of their combustible materials. These groups include (but are not limited to):

<b>Group A</b> Acetylene	<b>Group E</b> Metals including aluminum, magnesium (Div. 1 only)
<b>Group B</b> Hydrogen	<b>Group F</b> Carbonaceous dusts including coal, carbon black, coke
<b>Group C</b> Ethylene, carbon monoxide	<b>Group G</b> Dusts not included in E and F including wood, plastics, flour, starch or grain dusts
<b>Group D</b> Propane, gasoline, naphtha, benzene, butane, ethyl alcohol, acetone, methane	

## TYPICAL CLASS I LOCATIONS

- Petroleum refineries, and gasoline storage and dispensing areas
- Industrial firms that use flammable liquids in operations processes
- Petrochemical companies that manufacture chemicals from gas and oil
- Natural gas utility operations or natural gas powered electric generating facilities
- Companies that have spraying areas where products are coated with paint or plastics
- Aircraft hangers and fuel servicing areas
- Utility gas plants, and operations involving storage and handling of liquefied petroleum gas or natural gas

## TYPICAL CLASS II LOCATIONS

- Grain elevators, flour and feed mills
- Plants that manufacture, use or store magnesium or aluminum powders
- Plants that have chemical or metallurgical processes, producers of plastics, medicines and fireworks, etc.
- Producers of starch or candies
- Spice-grinding plants, sugar plants and cocoa plants
- Coal preparation plants and other carbon-handling or processing areas

## TYPICAL CLASS III LOCATIONS

- Textile mills, cotton gins, cotton seed mills and flax processing plants
- Any plant that shapes, pulverizes or cuts wood and creates sawdust or flyings
- Note: fibers and flyings are not likely to be suspended in the air, but can collect around machinery or on lighting fixtures and where heat, a spark or hot metal can ignite them.

# SAFETY RATED LIGHTING TOOLS



## WHY ARE SAFETY RATINGS IMPORTANT?

There are several types of locations in which it can be extremely dangerous to use flashlights that have not been specifically designed and approved for that environment. These are areas where fire or explosion hazards may exist due to the presence of flammable gases, liquids, vapors, dusts, or ignitable fibers or flyings. If you plan to use a flashlight in any potentially hazardous location, it is critical that your light be safety-rated for that specific environment.

## YOUR SAFETY IS OUR TOP PRIORITY

Since the most extreme hazardous conditions are often in dark places, Streamlight has developed a complete line of Class I, Division 1, safety-rated lighting tools approved for use in hazardous environments.



**STREAMLIGHT'S HAZ-LO SERIES OF LIGHTING TOOLS PROVIDE PEACE OF MIND WITH A DIVISION 1 RATING.**

When working in a Division 1 area, we expect explosive atmospheres to be present. Streamlight's HAZ-LO product line is suitable for use in these locations. While outfitting your crew with Division 1 level tools, it is important to note Class, Group and Temperature code requirements to select the correct flashlight for specific applications.

**STREAMLIGHT OFFERS YOU MORE SAFETY-RATED LIGHTING TOOLS TO GIVE YOU MORE OPTIONS IN HAZARDOUS LOCATIONS.**

Streamlight flashlights are tested and certified by the world's leading independent laboratories including Underwriters Laboratories, ATEX, Demko, and the Mine Safety and Health Administration (MSHA). This testing is your assurance that the Streamlight flashlight you choose will be safe in the environment(s) in which you'll be using it.





# PLANT OPERATIONS

## Strion® LED Series

Strion® LED		Strion LED HL®		
Light Source	C4® LED	C4® LED		
Battery	Rechargeable lithium ion	Rechargeable lithium ion		
Case Material	Anodized, machined aluminum housing; grooved barrel provides a sure grip	Anodized, machined aluminum housing; grooved barrel provides a sure grip		
	HIGH	MEDIUM	LOW	
LUMENS:	260	130	65	HIGH
CANDELA:	10,000	5,000	2,500	500
DISTANCE:	200m	141m	100m	250
RUN TIME:	2 hrs	4 hrs	7.5 hrs	125
	200m	141m	100m	
	1 hr	2 hrs	3.5 hrs	
Features	Designed for the broadest range of lighting needs at the best value; IPX4 water-resistant		Provides maximum illumination to illuminate a large area; IPX4 water-resistant	

If space in your tool box is limited, you want a flashlight that is small in size without sacrificing power or features. The rechargeable Strion LED series are ultra-compact and powerful, feature multiple lighting modes, and fully recharge in just 3 hours.

### Additional Features:

- Strion LED: Designed for the broadest range of lighting needs at the best value
- Strion LED HL: Delivers maximum illumination with a wide beam so you can see what's around you
- High beam for extreme brightness
- Medium beam for bright light and longer run time
- Low beam for a less intense beam
- Strobe function is ideal for signaling

- #74301 - Strion LED 120V AC/ 12V DC
- #74752 - Strion LED HL 120V AC/12V DC
- #74175 - Li Ion Battery - Strion LED Series



**HL**®

## PolyStinger® LED

PolyStinger LED			
Light Source	C4® LED		
Battery	Rechargeable NiCd or NiMH		
Case Material	Super-tough, non-conductive nylon polymer with non-slip rubberized comfort grip		
	HIGH	MEDIUM	LOW
LUMENS:	385	195	95
CANDELA:	26,000	13,000	6,500
DISTANCE:	322m	228m	161m
RUN TIME:	2 hrs	3.75 hrs	7.25 hrs
Features	Designed for the broadest range of lighting needs at the best value; IPX4 water-resistant		



When working around energized equipment, a non-metallic lighting tool is important. The PolyStinger LED, which is constructed of super-tough, non-conductive nylon polymer, is the right choice. A combination of rechargeability and C4® LED technology provides assurance that your flashlight is always ready to provide the brightness and run time you need to get through your shift.

### Additional Features:

- High, medium, low and strobe modes
- IPX4 water-resistant
- Durable - 3m impact resistance tested. If you drop it, it will still perform

- #76163 - PolyStinger LED 120V AC/12V DC (NiCd) - Yellow
- #76113 - PolyStinger LED 120V AC/12V DC (NiCd) - Black
- #75175 - NiCd Battery - Stinger LED Series
- #77375 - NiMH Battery - Stinger LED Series
- #75967 - Magnetic Mounting Clip (Stinger Series)

## Stinger® HPL™

Stinger HPL			
Light Source	C4® LED		
Battery	Rechargeable NiMH		
Case Material	Anodized aircraft aluminum body with non-slip rubberized comfort grip		
	HIGH	MEDIUM	LOW
LUMENS:	740	380	190
CANDELA:	48,000	24,000	12,000
DISTANCE:	438m	310m	219m
RUN TIME:	1.25 hrs	2.5 hrs	4.5 hrs
Features	Designed for down-range illumination; IPX4 water-resistant		



Using a rechargeable light like the Stinger HPL can help you save money on batteries when you're using a flashlight every day. It was designed with superior distance capability in mind (438 meters). In addition, four modes allow you to select the right amount of light for your job, extend the run time, or signal with the strobe function.

### Additional Features:

- AC/DC chargers allow you take the Stinger LED HP from the office to the truck
- Deep-dish parabolic reflector produces a super long-range beam
- 3 meter impact-resistance tested

- #75763 - Stinger HPL 120V AC/12V DC (NiCd)
- #75175 - NiCd Battery - Stinger LED Series
- #77375 - NiMH Battery - Stinger LED Series
- #75967 - Magnetic Mounting Clip (Stinger Series)

When you work in this field, you're responsible for keeping a facility's systems running smoothly. Whether you work on boilers, generators, turbines and electrical equipment, or lighting and HVAC systems, the support and maintenance of your facility is a top priority. Streamlight has a variety of flashlights that can meet your needs - from hand lantern based flood lights to small inspection lights that you can keep in your pocket.

## Stinger® Lite Pipe

Stinger Lite Pipe	
Light Source	Eight C4® LEDs
Battery	Rechargeable NiCd or NiMH
Case Material	Anodized aircraft aluminum body with a knurled barrel for a sure grip
LUMENS:	220
RUN TIME:	3.25 hrs
Features	Removable, rotatable hang-hook; IPX4 water-resistant

When you're working in cramped conditions and need to light a tight space, the Stinger Lite Pipe delivers. It features a narrow, 9-inch light bar with eight C4® LEDs that provide a soft flood of light to illuminate your work area. A rotatable hook gives you a hands-free lighting option, and it's removeable for those situations where space is limited.

### Additional Features:

- If you already have a xenon Stinger®, an optional Lite Pipe Kit allows you to convert it when you need a work light
- Includes magnetic mounting clip
- 1 meter impact-resistance tested

- #75684 - Stinger Lite Pipe - 120V AC/12V DC (NiCd)
- #75951 - Stinger Lite Pipe Kit
- #75175 - NiCd Battery - Stinger LED Series
- #77375 - NiMH Battery - Stinger LED Series
- #75967 - Magnetic Mounting Clip (Stinger Series)



## SL-20LP® C4 LED

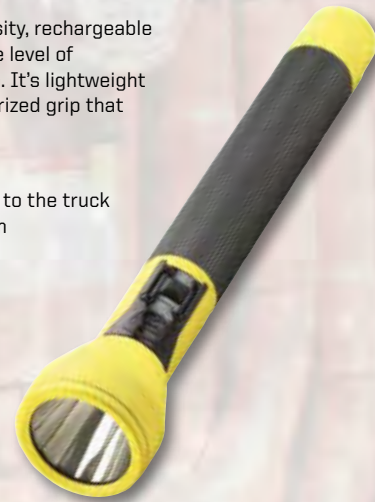
SL-20LP			
Light Source	C4® LED		
Battery	Rechargeable NiCd or NiMH		
Case Material	Lightweight, impact-resistant nylon polymer construction with non-slip rubber comfort grip		
LUMENS:	HIGH 350	MEDIUM 160	LOW 10
CANDELA:	60,000	27,000	1,000
DISTANCE:	490m	329m	63m
RUN TIME:	2 hrs	4 hrs	50 hrs
Features	Deep-dish parabolic reflector produces a tight beam with optimum peripheral illumination; IPX4 water-resistant		

Feature packed, the SL-20LP industrial-strength, high-intensity, rechargeable flashlight offers three lighting modes so you can choose the level of brightness you need. A strobe function signals your location. It's lightweight so you'll barely notice it on your tool belt, and it has a rubberized grip that makes it easy to hold.

### Additional Features:

- AC/DC chargers allow you take the SL-20LP from the office to the truck
- Deep-dish parabolic reflector produces a tight, 490m beam
- 1 meter impact-resistance tested

- #25223 - SL-20LP 120V AC/12V DC (NiCd) - Yellow



PLANT OPERATIONS

TRANSMISSION & DISTRIBUTION

NATURAL GAS UTILITY

WIND ENERGY





# PLANT OPERATIONS

## Portable Scene Light

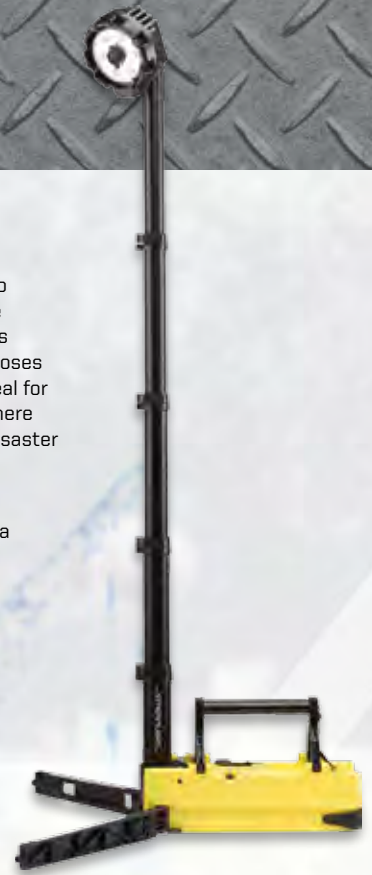
Portable Scene Light			
Light Source	Six C4® LEDs		
Battery	Sealed lead acid		
Case Material	High-impact, waterproof thermoplastic housing		
	HIGH	MEDIUM	LOW
LUMENS:	5,300	2,500	1,300
DISTANCE:	410m	292m	215m
RUN TIME:	4 hrs	9 hrs	18 hrs
Features	Design allows for use in confined spaces and rugged terrain; 12V DC power cord provides unlimited run time and charges batteries while in use		

Rapidly deployed and easily stowed, the Portable Scene Light brings 5,300 lumens to your work area. With its narrow footprint and 72" extension pole, this versatile scene light goes almost anywhere, from wide open places to tight, confined spaces such as stairwells. Stabilization legs provide balance on uneven surfaces so rugged terrain poses no problem for set up. It's extremely durable and water-resistant, which makes it ideal for bad weather use. The perfect lighting choice for power outages and egress areas where equipment needs repair. Also clean up after flooding conditions and other natural disaster related activities.

### Additional Features:

- Use it to light your way to your work site then quickly set it up to illuminate the area
- Three lighting modes each with selectable diffuser settings for two beam widths:
  - High for a super-bright flood light
  - Medium for an intense beam and longer run time
  - Low for when a less intense beam is ideal and for longer run time
- 90° swivel neck allows you to aim the beam where you need it
- 25 lbs (11.3 kg) provides weight stabilization, but is light enough to carry
- Packs to a compact size (22") so you can conveniently transport it to the work site

#45670 - Portable Scene Light 120V AC/12V DC - Yellow



## E-Flood® LiteBox® HL™

E-Flood LiteBox HL			
Light Source	Six C4® LEDs		
Battery	Sealed lead acid		
Case Material	High-impact thermoplastic housing with rubberized impact bumper		
	HIGH	MEDIUM	LOW
LUMENS:	3,600	2,400	1,100
CANDELA:	31,000	20,000	11,000
DISTANCE:	352m	283m	210m
RUN TIME:	5 hrs	9 hrs	18 hrs
Features	Maximum illumination; 12V DC power cord; toggle switch; cushioned grip handle; 90° rotating head for target lighting		

When you need maximum illumination with a wide beam to light your work area, the E-Flood LiteBox HL provides a blast of 3,600 lumens. Economical and compact, it features selectable diffuser settings and three different lighting modes enable you set the beam width, intensity and run time you need for your task. Rapid deployment, a 90° tilting head and indefinite run time using its 12V DC power cord ensures that you will always have light where and when you need it.

### Additional Features:

- High lumen beam for maximum illumination
- Standard system includes AC/DC charge cords, mounting rack and shoulder strap
- Vehicle mount system includes truck-mountable hard-wire rack and shoulder strap

#45661 - E-Flood LiteBox HL Standard System - Orange

#45665 - E-Flood LiteBox HL Vehicle Mount - Orange

#45660 - E-Flood LiteBox HL Without Charger - Orange



## Fire Vulcan® LED

Fire Vulcan LED		
Light Source	C4® LED and two ultra-bright blue taillight LEDs	
Battery	Lithium ion	
Case Material	High-impact thermoplastic with cushioned grip handle	
	HIGH	LOW
LUMENS:	145	70
CANDELA:	80,000	40,000
RUN TIME:	3.5 hrs	7 hrs
Features	Lightweight; waterproof; eight programmable switch functions	

Some equipment failures always seem to happen in the dark, so you need to be ready. The Fire Vulcan LED delivers a focused, bright spotlight with significant range to illuminate from a distance. This tough, waterproof lantern is ideal for inspecting damp, dark and dusty areas. It comes with a convenient shoulder strap and at 1.85 lbs, it's easy to carry and won't wear you out while you work.

### Additional Features:

- Blue safety tail lights (can be programmed on or off)
- IPX7 waterproof to 1 meter for 30 minutes
- Vehicle mountable charge rack lets you take it from the office to the truck

#44450 - Fire Vulcan LED Standard System - 120V AC/12V DC - Orange

#44451 - Fire Vulcan LED Vehicle Mount - Orange

#44454 - Fire Vulcan LED Without Charger - Orange





# E-Flood®/E-Spot® LiteBox®

	<i>E-Flood LiteBox</i>	<i>E-Spot LiteBox</i>																														
<i>Light Source</i>	Six C4® LEDs within six wide pattern parabolic reflectors	Three C4® LEDs within three deep dish parabolic reflectors																														
<i>Battery</i>	Sealed lead acid	Sealed lead acid																														
<i>Case Material</i>	High-impact thermoplastic with rubberized impact bumper	High-impact thermoplastic with rubberized impact bumper																														
	<table border="1"> <thead> <tr> <th></th> <th>HIGH</th> <th>LOW</th> </tr> </thead> <tbody> <tr> <td>LUMENS:</td> <td>615</td> <td>330</td> </tr> <tr> <td>CANDELA:</td> <td>4,000</td> <td>2,150</td> </tr> <tr> <td>DISTANCE:</td> <td>126m</td> <td>93m</td> </tr> <tr> <td>RUN TIME:</td> <td>8 hrs</td> <td>18 hrs</td> </tr> </tbody> </table>		HIGH	LOW	LUMENS:	615	330	CANDELA:	4,000	2,150	DISTANCE:	126m	93m	RUN TIME:	8 hrs	18 hrs	<table border="1"> <thead> <tr> <th></th> <th>HIGH</th> <th>LOW</th> </tr> </thead> <tbody> <tr> <td>LUMENS:</td> <td>540</td> <td>330</td> </tr> <tr> <td>CANDELA:</td> <td>55,000</td> <td>32,000</td> </tr> <tr> <td>DISTANCE:</td> <td>469m</td> <td>358m</td> </tr> <tr> <td>RUN TIME:</td> <td>7 hrs</td> <td>15 hrs</td> </tr> </tbody> </table>		HIGH	LOW	LUMENS:	540	330	CANDELA:	55,000	32,000	DISTANCE:	469m	358m	RUN TIME:	7 hrs	15 hrs
	HIGH	LOW																														
LUMENS:	615	330																														
CANDELA:	4,000	2,150																														
DISTANCE:	126m	93m																														
RUN TIME:	8 hrs	18 hrs																														
	HIGH	LOW																														
LUMENS:	540	330																														
CANDELA:	55,000	32,000																														
DISTANCE:	469m	358m																														
RUN TIME:	7 hrs	15 hrs																														
<i>Features</i>	Floodlight design; IPX4 water-resistant; serialized for positive identification; push-button switch; cushioned grip handle	Spotlight design; IPX4 water-resistant; Serialized for positive identification; push-button switch; cushioned grip handle																														

#45801 - E-Flood LiteBox Standard System - 120V AC/12V DC - Orange

#45805 - E-Flood LiteBox Vehicle Mount - Orange

#45806 - E-Flood LiteBox Without Charger - Orange

#45851 - E-Spot LiteBox Standard System - 120V AC/12V DC - Orange

#45855 - E-Spot LiteBox Vehicle Mount - Orange

#45856 - E-Spot LiteBox Without Charger Orange

## E-Flood LiteBox

Uniform flood lights are ideal when a job requires illuminating a wide area, such as a vault or equipment room. Featuring a head that tilts more than 90° and swivels almost 360°, a weighted base and a run time of up to 18 hours, the industrial-duty E-Flood LiteBox can help you keep your task illuminated on even the longest shifts.



## E-Spot LiteBox

Occasionally, you need to make inspections from a distance or light an aerial project from the ground. If this is the case, you may want to consider the E-Spot LiteBox. With a run time of 7 hours, a 469m beam distance and a head that tilts more than 90° and swivels almost 360°, this is a good tool for illuminating dark ceilings or high bays, structures, cranes or conveyors.



## Additional Features:

- Mode settings allow selection of more light output or extended run time

# Waypoint®

	<i>Alkaline Model</i>	<i>Rechargeable Model</i>																																			
<i>Light Source</i>	C4® LED	C4® LED																																			
<i>Battery</i>	Four "C" alkaline batteries (sold separately)	Lithium ion																																			
<i>Case Material</i>	Polycarbonate with cushioned grip handle	Polycarbonate with cushioned grip handle																																			
	<table border="1"> <thead> <tr> <th></th> <th>HIGH</th> <th>LOW</th> </tr> </thead> <tbody> <tr> <td>LUMENS:</td> <td>550</td> <td>40</td> </tr> <tr> <td>CANDELA:</td> <td>100,000</td> <td>7,900</td> </tr> <tr> <td>DISTANCE:</td> <td>625m</td> <td>178m</td> </tr> <tr> <td>RUN TIME:</td> <td>10 hrs</td> <td>82 hrs</td> </tr> </tbody> </table>		HIGH	LOW	LUMENS:	550	40	CANDELA:	100,000	7,900	DISTANCE:	625m	178m	RUN TIME:	10 hrs	82 hrs	<table border="1"> <thead> <tr> <th></th> <th>HIGH</th> <th>MEDIUM</th> <th>LOW</th> </tr> </thead> <tbody> <tr> <td>LUMENS:</td> <td>1,000</td> <td>550</td> <td>35</td> </tr> <tr> <td>CANDELA:</td> <td>115,000</td> <td>60,000</td> <td>10,000</td> </tr> <tr> <td>DISTANCE:</td> <td>678m</td> <td>490m</td> <td>200m</td> </tr> <tr> <td>RUN TIME:</td> <td>3 hrs</td> <td>6 hrs</td> <td>80 hrs</td> </tr> </tbody> </table>		HIGH	MEDIUM	LOW	LUMENS:	1,000	550	35	CANDELA:	115,000	60,000	10,000	DISTANCE:	678m	490m	200m	RUN TIME:	3 hrs	6 hrs	80 hrs
	HIGH	LOW																																			
LUMENS:	550	40																																			
CANDELA:	100,000	7,900																																			
DISTANCE:	625m	178m																																			
RUN TIME:	10 hrs	82 hrs																																			
	HIGH	MEDIUM	LOW																																		
LUMENS:	1,000	550	35																																		
CANDELA:	115,000	60,000	10,000																																		
DISTANCE:	678m	490m	200m																																		
RUN TIME:	3 hrs	6 hrs	80 hrs																																		
<i>Features</i>	12V DC power cord provides indefinite run time; IPX4 water-resistant; emergency signal runs 82 hours; trigger-style power switch; rotary mode selection switch	IPX8 submersible 2m for 30 minutes; trigger-style power switch; rotary mode selection switch; it floats																																			

These comfortable pistol-grip design, handheld spotlights feature an incredible distance capability to illuminate far-off objects. An integrated stand allows you to set them down and use them as stationary lights for quick repairs. In addition, alkaline and rechargeable models give you the choice of the power source option that suits your needs, both at an exceptional value for the performance. These are the perfect tools for inspecting high bays, boilers, stacks and containment pits, or any other equipment you can't get close to easily.

## Additional Features:

- Long-range targeting beam (alkaline: 625m; rechargeable: 678m)



#44900 - Waypoint (alkaline) with 12V DC power cord - Yellow

#44902 - Waypoint (alkaline) with 12V DC power cord - Black

#44910 - Waypoint (rechargeable) with 120V AC - Yellow

#44911 - Waypoint (rechargeable) with 120V AC - Black

#44909 - 12V DC Cord (for rechargeable model)

PLANT OPERATIONS

TRANSMISSION & DISTRIBUTION

NATURAL GAS UTILITY

WIND ENERGY



# PLANT OPERATIONS

## Knucklehead® / Knucklehead® HAZ-LO®



Div 2	Flood Model	Spot Model	HAZ-LO	Flood Model	Spot Model
<b>Light Source</b>	Two C4® LEDs	C4® LED	<b>Light Source</b>	Two C4® LEDs	C4® LED
<b>Battery</b>	Rechargeable NiCd; also accepts 4 "AA" alkaline batteries	Rechargeable NiCd; also accepts 4 "AA" alkaline batteries	<b>Battery</b>	Rechargeable NiCd; also accepts 4 "AA" alkaline batteries	Rechargeable NiCd; also accepts 4 "AA" alkaline batteries
<b>Case Material</b>	Nylon polymer	Nylon polymer	<b>Case Material</b>	Nylon polymer	Nylon polymer
<b>LUMENS:</b>	HIGH 200 LOW 63	HIGH 180 LOW 55	<b>LUMENS:</b>	HIGH 163 LOW 50	HIGH 150 LOW 55
<b>CANDELA:</b>	1,150 350	11,000 3,300	<b>CANDELA:</b>	730 230	12,900 4,300
<b>DISTANCE:</b>	68m 37m	210m 115m	<b>DISTANCE:</b>	54m 30m	227m 131m
<b>RUN TIME:</b>	3.5 hrs 16 hrs	3.5 hrs 16 hrs	<b>RUN TIME:</b>	3.75 hrs 12 hrs	3.5 hrs 12 hrs
<b>Features</b>	Floodlight design; IPX4 water-resistant; safety rated: Class I & II, Div. 2	Spotlight design; IPX4 water-resistant; safety rated: Class I & II, Div. 2	<b>Features</b>	Floodlight design; IPX4 water-resistant; safety rated: Class I & II, Div. 1	Spotlight design; IPX4 water-resistant; safety rated: Class I & II, Div. 1



Make maintenance work in the plant a little easier with the Knucklehead, which features a 210° articulating head that rotates 360° to aim the beam at any area. Multiple hands-free uses: stand it up, lay it down, attach it to belts or harnesses with a spring-loaded clip, hang it from its hook, or adhere it to a metal surface with its super-strong magnet (135 lbs of pull strength). No more juggling your flashlight and your tools to complete a task.

### Additional Features:

- Flood model: Dual C4® LEDs within a wide reflector produces a smooth floodlight for up-close work
  - Spot model: Single LED within a parabolic reflector provides a tighter beam for longer range target illumination
  - Four modes:
    - High beam for more brightness
    - Low beam for longer run time
    - Emergency flash for signaling
    - Moonlight for low-level lighting and extended run time
  - Features either stowable hook or spring-loaded clip
  - Rechargeable models include an optional 4 "AA" battery carrier for fast battery replacement
  - Safety rated:
    - Div 2 models: Class I, Division 2, Groups A,B,C,D; Class II, Division 2, Groups F,G; Class III, Temp Code: T4
    - HAZ-LO (Div 1) models: Class I & II, Division 1, Groups C,D,F,G; Class I, Division 2, Groups A,B,C,D; Class III, T4
    - MSHA Permissible Flashlight; Approval. No. 20-4140001-0: Tested for Intrinsic Safety in Methane-Air mixtures only.
- Charge or replace batteries in fresh air only

### Division 2 Models

#### Flood Models

- #90627 - Knucklehead (with hook) 120V AC/12V DC - Yellow
- #90642 - Knucklehead (with hook) Alkaline Yellow
- #90657 - Knucklehead (with clip) 120V AC/12V DC - Orange
- #90644 - Knucklehead (with clip) Alkaline - Orange

#### Spot Models

- #90757 - Knucklehead (with clip) 120V AC/12V DC - Orange
- #90744 - Knucklehead (with clip) Alkaline - Orange

### HAZ-LO (Division 1) Models

#### Flood Models

- #91627 - Knucklehead (with hook) 120V AC/12V DC - Yellow
- #91642 - Knucklehead (with hook) Alkaline - Yellow
- #91657 - Knucklehead (with clip) 120V AC/12V DC - Orange
- #91644 - Knucklehead (with clip) Alkaline - Orange

#### Spot Models

- #91727 - Knucklehead (with hook) 120V AC/12V DC - Yellow
- #91742 - Knucklehead (with hook) Alkaline - Yellow
- #91757 - Knucklehead (with clip) 120V AC/12V DC - Orange
- #91744 - Knucklehead (with clip) Alkaline - Orange



## Super Siege®

Super Siege			
Light Source	White C4® LED, Red C4 LED		
Battery	Rechargeable lithium ion		
Case Material	Durable, polymer construction with rubber molded base		
	HIGH	MEDIUM	LOW
LUMENS:	1,100	550	125
RUN TIME:	5 hrs	10.5 hrs	35 hrs
Features	Auxiliary USB power; watertight storage compartment; IPX7 waterproof to 1m submersion; it floats; battery level indicator		



Rechargeable scene light/work lantern provides 360° of bright light that illuminates an entire scene. Removeable Glare Guard™ allows for up-close task lighting.

### Additional Features:

- Auxiliary USB power source charges your Streamlight USB flashlights, most smart phones and tablets
- Set it to SOS mode for emergency situations
- Spring-loaded D-rings on both ends of lantern - hang in either inverted or upright positions
- Ergonomic handle with incorporated hang hook
- Working in a grueling environment? No problem! A rubber base keeps it stable on slippery or uneven surfaces and a watertight storage compartment keeps small items dry

#44945 - Super Siege -120V AC - Yellow

## The Siege®

The Siege			
Light Source	White C4® LED, Red C4 LED		
Battery	Three "D" alkaline batteries		
Case Material	Durable, polymer construction with rubber molded base		
	HIGH	MEDIUM	LOW
LUMENS:	340	175	33
RUN TIME:	30 hrs	70 hrs	295 hrs
Features	IPX7 waterproof to 1m submersion; it floats; 2m impact resistance tested; battery level indicator		



Rugged, cordless, alkaline battery-powered lantern provides 360° of soft, even light that illuminates a large area. Extended run time (12 days) will get you through many shifts.

### Additional Features:

- Provides soft, even 360° light distribution
- Set it to SOS mode for emergency situations
- Spring-loaded D-rings on both ends of lantern - hang in either inverted or upright positions
- Ergonomic handle with incorporated hang hook
- Working in a grueling environment? No problem! A rubber base keeps it stable on slippery or uneven surfaces

#44931 - The Siege - Coyote

## Siege® AA

Siege AA			
Light Source	White C4® LED, Red LED		
Battery	Three "AA" alkaline batteries		
Case Material	Durable, polymer construction with rubber molded base		
	HIGH	MEDIUM	LOW
LUMENS:	200	100	50
RUN TIME:	7 hrs	15.5 hrs	37 hrs
Features	Magnetic base; IPX7 waterproof to 1m submersion; it floats; 2m impact resistance tested; battery level indicator		

Compact, rugged, alkaline battery-powered lantern provides 360° of soft, even light that illuminates a large area. It has a magnetic base so you can attach it to steel surfaces for hands-free use.

### Additional Features:

- Magnetic base grabs onto steel surfaces
- Compact and lightweight (5.44"; 8.8 oz.) so it's easy to carry
- Set it to SOS mode for emergency situations
- Spring-loaded D-ring on top lantern to hang or attach to gear
- Ergonomic handle with incorporated hang hook
- Rubber base keeps it stable on slippery or uneven surfaces

#44945 - Siege AA with Magnetic Base - Yellow

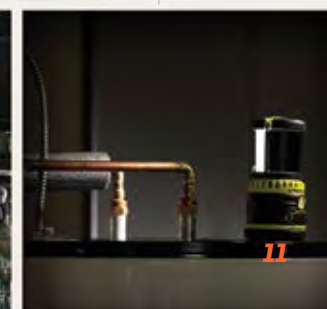


PLANT OPERATIONS

TRANSMISSION & DISTRIBUTION

NATURAL GAS UTILITY

WIND ENERGY



# PLANT OPERATIONS

## ProPolymer® Dualie® Series



3AA ProPolymer® Dualie®		3AA ProPolymer® Dualie® Laser		
Light Source	C4® LED	C4® LED/ 640-650nm red laser		
Battery	Three "AA" alkaline batteries	Three "AA" alkaline batteries		
Case Material	Non-conductive polymer with rocky stipple texture	Non-conductive polymer with rocky stipple texture		
		SPOT	FLOOD	COMBO
LUMENS:		140	140	245
CANDELA:		7,300	80	7,300
DISTANCE:		171m	18m	171m
RUN TIME:		18 hrs	18 hrs	9 hrs
Features	Spot and flood beam; integrated, snag-free pocket clip conforms to body of light; IPX7 waterproof to 1m for 30 minutes			
		SPOT	LASER	COMBO
		150	<5mW	150
		7,700	---	7,700
		175m	---	175m
		17 hrs	70 hrs	12 hrs
Features	Spot beam and red laser; integrated, snag-free pocket clip conforms to body of light; IPX7 waterproof to 1m for 30 minutes			

### 3AA PROPOLYMER® DUALIE®

See what's ahead of you and right in front of your feet with the 3AA ProPolymer Dualie. Its bright light, which shines both ahead of you and downward, helps you avoid slips, trips and falls. Intrinsically Safe - Class I & II, Div. 1.

- #68750 - 3AA ProPolymer Dualie - Yellow
- #68751 - 3AA ProPolymer Dualie w/o batteries - Yellow
- #68752 - 3AA ProPolymer Dualie - Black
- #68753 - 3AA ProPolymer Dualie w/o batteries - Black

### 3AA PROPOLYMER® DUALIE® LASER

Intrinsically safe flashlight featuring a red laser pointer. Along with a focused spot beam, you can see what's ahead of you and illuminate your work area, as well as identify and pinpoint objects at a distance. Intrinsically Safe - Class I & II, Div. 1.

- #68760 - 3AA ProPolymer Dualie Laser - Yellow
- #68762 - 3AA ProPolymer Dualie Laser - Black

#68089 - Poly Mount Kit (3AA/4AA)



## 3AA ProPolymer® HAZ-LO®



3AA ProPolymer HAZ-LO	
Light Source	C4® LED
Battery	Three "AA" alkaline batteries
Case Material	Non-conductive polymer
	LUMENS: 120
	CANDELA: 14,000
	DISTANCE: 237m
	RUN TIME: 6.5 hrs
Features	IP67 rated for dust-tight and waterproof to 1m for 30 minutes; IPX4 for water spray; sealed switch protected from battery leakage; wrist lanyard connection

When durability, size, value, safety and performance are all equally important, the 3AA ProPolymer HAZ-LO is a light to consider. It is constructed of high-performance, anti-static, thermoplastic material that is resistant to corrosive solvents. Safety rated - Class I & II, Div. 1.

#### Additional Features:

- UL and C-UL: Class I, Division 1, Groups A,B,C,D; Class II, Division 1, Groups E,F,G; Class III; Exia; Temperature Code T4
- Three "AA" alkaline batteries reduce battery costs by 25% over 4AA models
- Non-conductive, shock-resistant and corrosion-proof
- Ergonomically-shaped grip for comfort
- Optional Poly Mount Kit mounts to hard hats for hands-free use

- #68720 - 3AA ProPolymer HAZ-LO - Yellow
- #68088 - Belt Clip Accessory
- #68089 - Poly Mount Kit





## 4AA ProPolymax®

4AA ProPolymax																
Light Source	C4® LED															
Battery	Four "AA" alkaline batteries															
Case Material	Non-conductive polymer															
	<table border="1"> <thead> <tr> <th></th> <th>HIGH</th> <th>LOW</th> </tr> </thead> <tbody> <tr> <td>LUMENS:</td> <td>300</td> <td>50</td> </tr> <tr> <td>CANDELA:</td> <td>17,000</td> <td>2,500</td> </tr> <tr> <td>DISTANCE:</td> <td>261m</td> <td>100m</td> </tr> <tr> <td>RUN TIME:</td> <td>2.75 hrs</td> <td>24 hrs</td> </tr> </tbody> </table>		HIGH	LOW	LUMENS:	300	50	CANDELA:	17,000	2,500	DISTANCE:	261m	100m	RUN TIME:	2.75 hrs	24 hrs
	HIGH	LOW														
LUMENS:	300	50														
CANDELA:	17,000	2,500														
DISTANCE:	261m	100m														
RUN TIME:	2.75 hrs	24 hrs														
Features	Sealed switch design prevents corrosion of the contacts; IP67 dust-tight and waterproof to 1m for 30 minutes; IPX4 for water spray, wrist lanyard connection															

All weather durability and high performance are key features of a general purpose utility light. The 4AA ProPolymax is a tough as nails, super-bright (300 lumens) lighting tool that will cut through the darkness and endure all kinds of hard work.

### Additional Features:

- TEN-TAP® programmable switch allows you to customize the light output to best suit your needs: high/low/strobe, high only or low/high
- High-performance, anti-static, impact-resistant, thermoplastic body is resistant to chemicals and solvents, and it's waterproof - perfect for use in damp, dirty, grueling environments
- A tight, 261m beam reach helps you see into those dark, out-of-the-way places
- Powered by affordable, easy-to-find "AA" alkaline batteries
- Safety rated: Class I & II, Division 2

#68820 - 4AA ProPolyMax - Yellow

#68088 - Belt Clip Accessory

#68089 - Poly Mount Kit



## 3C ProPolymer® HAZ-LO®

3C ProPolymer HAZ-LO									
Light Source	C4® LED								
Battery	Three "C" alkaline batteries								
Case Material	Non-conductive polymer								
	<table border="1"> <tbody> <tr> <td>LUMENS:</td> <td>150</td> </tr> <tr> <td>CANDELA:</td> <td>7,000</td> </tr> <tr> <td>DISTANCE:</td> <td>167m</td> </tr> <tr> <td>RUN TIME:</td> <td>18 hrs</td> </tr> </tbody> </table>	LUMENS:	150	CANDELA:	7,000	DISTANCE:	167m	RUN TIME:	18 hrs
LUMENS:	150								
CANDELA:	7,000								
DISTANCE:	167m								
RUN TIME:	18 hrs								
Features	IP67 rated for dust-tight and waterproof to 1m for 30 minutes; sealed switch protected from battery leakage; spring-loaded pocket clip grabs onto belts and gear								

The 3C ProPolymer HAZ-LO's larger size makes it suited for situations where gloves are typically worn and it features a strong spring-loaded clip to keep it in your pocket or tool bag, as well as a push-button tailswitch for one-handed operation. Safety rated - Class I & II, Div. 1.

### Additional Features:

- UL and C-UL: Class I, Division 1, Groups A,B,C,D; Class II, Division 1, Groups E,F,G; Class III; Exia; Temperature Code T4
- MSHA Permissible Flashlight Approval No. 20-A130003-0  
Tested for Intrinsic Safety in methane-air mixtures only
- Larger size is suited for situations where gloves are typically worn
- Non-conductive, shock-resistant and corrosion-proof

#33820 - 3C ProPolymer HAZ-LO - Yellow



PLANT OPERATIONS

TRANSMISSION & DISTRIBUTION

NATURAL GAS UTILITY

WIND ENERGY

## 2AA ProPolymer® HAZ-LO®

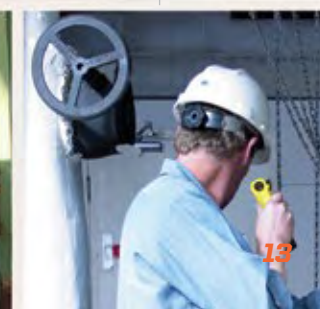
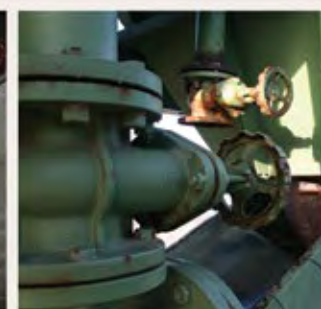
2AA ProPolymer HAZ-LO									
Light Source	C4® LED								
Battery	Two "AA" alkaline batteries								
Case Material	Non-conductive polymer								
	<table border="1"> <tbody> <tr> <td>LUMENS:</td> <td>65</td> </tr> <tr> <td>CANDELA:</td> <td>2,300</td> </tr> <tr> <td>DISTANCE:</td> <td>96m</td> </tr> <tr> <td>RUN TIME:</td> <td>24 hrs</td> </tr> </tbody> </table>	LUMENS:	65	CANDELA:	2,300	DISTANCE:	96m	RUN TIME:	24 hrs
LUMENS:	65								
CANDELA:	2,300								
DISTANCE:	96m								
RUN TIME:	24 hrs								
Features	Wrist lanyard connection; integrated pocket clip								

A lightweight flashlight with a reasonable distance capability (96 meters), the 2AA ProPolymer HAZ-LO is a good choice for operations crews who need a general purpose light. It's compact enough to fit in your pocket with a durable, super-tough nylon housing that beats out most entry-level flashlights.

### Additional Features:

- IPX7 Waterproof
- Safety rated - Class I & II, Div 1
- MSHA permissible flashlight. Approval No. 20-A140002-0. Tested for Intrinsic Safety in Methane-Air mixtures only

#67101 - 2AA ProPolymer HAZ-LO - Yellow



# PLANT OPERATIONS

## Div. 2 Headlamps

	Septor®			Trident®			Argo®			
<b>Light Source</b>	Seven ultra-bright white LEDs			One C4® LED, three ultra-bright white LEDs			C4® LED			
<b>Battery</b>	Three "AAA" alkaline batteries			Three "AAA" alkaline batteries			Three "AAA" alkaline batteries			
<b>Case Material</b>	Impact resistant ABS construction			Impact resistant ABS construction			Impact resistant ABS construction			
<b>LUMENS:</b>	7 LEDs	3 LEDs	1 LED	C4 LED	3 LEDs	1 LED	HIGH	MEDIUM	LOW	
	120	45	13	80	35	11	150	100	45	
	<b>CANDELA:</b>	900	375	100	4,000	385	120	9,250	6,375	2,750
	<b>DISTANCE:</b>	60m	35m	20m	126m	39m	22m	190m	160m	103m
	<b>RUN TIME:</b>	3.5 hrs	10 hrs	55 hrs	5 hrs	10 hrs	53 hrs	3 hrs	4.5 hrs	30 hrs
<b>Features</b>	Adjustable elastic head strap; rubber hard hat strap; battery level indicator; IPX4 water-resistant; 90° tilting head reduces neck fatigue			Adjustable elastic head strap; rubber hard hat strap; battery level indicator; IPX4 water-resistant; 90° tilting head reduces neck fatigue			Adjustable elastic head strap; rubber hard hat strap; battery level indicator; IPX4 water-resistant; 90° tilting head reduces neck fatigue			



### Septor® - Ideal for up-close lighting

When a job requires the use of both hands, the Septor is the headlight of choice. Specifically engineered to maximize run time, it offers 3 lighting modes (1, 3 or 7 LEDs) and a 90° tilting head so you can aim the light where you need it. Septor produces a soft flood light that is designed to minimize eye strain and is ideal for up-close work. It's also safety rated: Class I & II, Div. 2.

#61052 - Septor - Yellow

### Trident® - Ideal for distance and up-close lighting

The Trident is another option for when you're worried about juggling your tools and a flashlight. This headlamp's 90° tilting head can help reduce neck fatigue, while giving you the use of both hands when lifting, carrying and making repairs. It combines a single, distance oriented C4® LED with three ultra-bright high-intensity flood LEDs, giving you multiple lighting choices in a single headlamp. It's also safety rated: Class I & II, Div. 2.

#61050 - Trident - Yellow

### Argo® - Ideal for long-distance lighting

Whether you're climbing, making repairs, trouble shooting or carrying supplies, the last thing you want to worry about is carrying a flashlight. That's why a headlamp like the versatile Argo is a good choice. Three brightness levels give you the best lighting options to suit your needs: High for super-bright, far-reaching beam, medium for longer run times, low for extended run times. It's also safety rated: Class I & II, Div. 2.

#61301 - Argo - Yellow

## Div. 1 Headlamps



	Septor HAZ-LO		Trident HAZ-LO		Argo HAZ-LO	
<b>Light Source</b>	Seven ultra-bright white LEDs		One C4® LED, three ultra-bright white LEDs		C4® LED	
<b>Battery</b>	Three "AAA" alkaline batteries		Three "AAA" alkaline batteries		Three "AAA" alkaline batteries	
<b>Case Material</b>	Impact resistant thermoplastic		Impact resistant thermoplastic		Impact resistant thermoplastic	
<b>LUMENS:</b>	LOW	HIGH	LOW	HIGH	LOW	HIGH
	20	85	30	85	20	90
<b>CANDELA:</b>	150	620	300	2,600	700	3,200
<b>DISTANCE:</b>	24m	50m	35m	102m	53m	113m
<b>RUN TIME:</b>	50 hrs	8 hrs	24 hrs	8 hrs	50 hrs	8 hrs
<b>Features</b>	Adjustable elastic head strap; rubber hard hat strap; IPX4 water-resistant; 90° tilting head reduces neck fatigue		Adjustable elastic head strap; rubber hard hat strap; IPX4 water-resistant; 90° tilting head reduces neck fatigue		Adjustable elastic head strap; rubber hard hat strap; IPX4 water-resistant; 90° tilting head reduces neck fatigue	



### Septor® HAZ-LO® - Ideal for up-close lighting

When a Division 1 work environment has tasks that require the use of both hands, the Septor HAZ-LO is the headlight of choice. It offers low and high lighting modes and a 90° tilting head so you can aim the light where you need it. Septor HAZ-LO produces a soft flood light that is designed to minimize eye strain. Class I & II, Div. 1 safety rated.

#61024 - Septor HAZ-LO - Yellow

### Trident® HAZ-LO® - Ideal for distance & up-close lighting

The Trident is another option for when you're worried about juggling your tools and a Div. 1 flashlight. This headlamp's 90° tilting head can help reduce neck fatigue, while giving you the use of both hands when lifting, carrying and making repairs. It combines a single, distance oriented C4® LED with three ultra-bright high-intensity flood LEDs, giving you multiple lighting choices in a single headlamp. Class I & II, Div. 1 safety rated.

#61025 - Trident HAZ-LO - Yellow

### Argo® HAZ-LO® - Ideal for long-distance lighting

Whether you're climbing, making repairs, trouble shooting or carrying supplies, the last thing you want to worry about is carrying a flashlight. That's why a headlamp like the versatile Argo HAZ-LO is a good choice. Low and high brightness levels give you a choice of lighting options to suit your needs: Low for extended run time, high for super-bright, far-reaching beam. Class I & II, Div. 1 safety rated.

#61026 - Argo HAZ-LO - Yellow



## ProTac HL® Headlamp



ProTac HL Headlamp			
Light Source	C4® LED		
Battery	Two CR123A lithium batteries		
Case Material	Anodized, machined aluminum		
	HIGH	MEDIUM	LOW
LUMENS:	635	105	20
CANDELA:	8,500	1,450	280
DISTANCE:	184m	76m	33m
RUN TIME:	1.75 hrs	8 hrs	36 hrs
Features	TEN-TAP® Programming; IPX4 water-resistant; 1m impact-resistance tested		



When your task requires both hands and a bright light with a wide, flood beam, reach for the ProTac HL Headlamp. It produces 635 lumens of a bright, wide flood light. With a 90° tilting head to aim the beam, you'll have maximum comfort and stability whether you're using the rubber hard hat strap or the adjustable elastic head strap.

### Additional Features:

- TEN-TAP® programming - user selectable programs: 1.) High/medium/low; 2.) High only; 3.) Low/medium/high
- High for super-bright light with far-reaching beam distance;
- Medium for bright light and longer run time; Low for when a less intense beam is ideal and for extended run time

#61304 - ProTac HL Headlamp

## Double Clutch® USB



Double Clutch				
Light Source	C4® LED			
Battery	Lithium polymer; also accepts 3 AAA alkaline			
Case Material	Polymer construction			
	HIGH/SPOT	LOW/SPOT	HIGH/FLOOD	LOW/FLOOD
LUMENS:	125	30	125	30
CANDELA:	1,700	400	250	70
DISTANCE:	82m	40m	31	4m
RUN TIME:	3.5 hrs <sup>(LiH)</sup> 6 hrs <sup>(alk)</sup>	10 hrs <sup>(LiH)</sup> 18 hrs <sup>(alk)</sup>	3.5 hrs <sup>(LiH)</sup> 6 hrs <sup>(alk)</sup>	10 hrs <sup>(LiH)</sup> 18 hrs <sup>(alk)</sup>
Features	Dual fuel - multiple power sources; USB rechargeable; IPX4 water-resistant; 2m impact-resistance tested			



The Double Clutch USB gives you the flexibility of shifting between beams and modes to fit your task, as well as choosing your battery source. It is also easy to use, even with gloves - just a quick twist of the facecap turns the light on and off, or changes the output from spot to flood.

### Additional Features:

- Dual-fuel: Powered by USB rechargeable lithium polymer battery; also accepts 3 AAA alkaline or lithium batteries as back-up
- Low-profile construction with optimized center of gravity provides maximum comfort and stability during use
- 60° tilting head reduces neck fatigue
- Includes USB cord, and adjustable elastic and hard hat straps; optional AC wall adapter available

#61600 - Double Clutch USB Charge Cord- Yellow

#61602 - Double Clutch with 120V AC Charger- Yellow

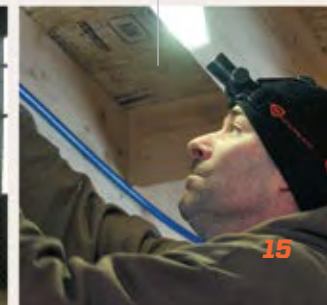
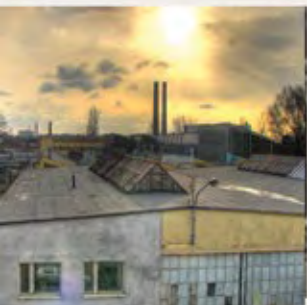
#61607 - Double Clutch Alkaline - Yellow

PLANT OPERATIONS

TRANSMISSION & DISTRIBUTION

NATURAL GAS UTILITY

WIND ENERGY



# PLANT OPERATIONS

## ProTac® Series

	ProTac® 2L	ProTac® 2AA	ProTac® 2AAA
<b>Light Source</b>	C4® LED	C4® LED	C4® LED
<b>Battery</b>	Two 3V CR123A lithium batteries	Two "AA" alkaline batteries	Two "AAA" alkaline batteries
<b>Case Material</b>	Anodized, machined aluminum	Anodized, machined aluminum	Anodized, machined aluminum
<b>LUMENS:</b>	HIGH	HIGH	HIGH
	LOW	LOW	LOW
	260	155	80
	13	11	10
<b>CANDELA:</b>	5,600	3,300	1,550
	300	200	200
<b>DISTANCE:</b>	150m	115m	80m
	35m	28m	28m
<b>RUN TIME:</b>	3 hrs	2 hrs	1.5 hrs
	50 hrs	36 hrs	30 hrs
<b>Features</b>	TEN-TAP® Programming; IPX7 waterproof to 1m for 30 minutes	TEN-TAP® Programming; IPX7 waterproof to 1m for 30 minutes	IPX7 waterproof to 1m for 30 minutes



These compact professional tactical lights are small in size and high on performance! These little lights can be carried effortlessly on a belt or in the shirt pocket.

### Additional Features:

- TEN-TAP® Programming (ProTac 2L/2AA) - Choice of three user selectable programs: 1.) high/strobe/low; 2.) high only; 3.) low/high
- High beam for increased brightness
- Low beam for lighting without the glare and extended run times
- Strobe mode for signaling
- Includes nylon holster

#88031 - ProTac 2L

#88033 - ProTac 2AA

#88039 - ProTac 2AAA

## ProTac HL® USB HL®

ProTac HL USB			
<b>Light Source</b>	C4® LED		
<b>Battery</b>	Lithium ion		
<b>Case Material</b>	Anodized, machined aluminum		
<b>LUMENS:</b>	HIGH	MEDIUM	LOW
	850	350	85
	10,000	4,000	1,000
<b>CANDELA:</b>	200m	126m	63m
	1.5 hrs	4 hrs	12 hrs
<b>DISTANCE:</b>	1.5 hrs	4 hrs	12 hrs
<b>RUN TIME:</b>	1.5 hrs	4 hrs	12 hrs
<b>Features</b>	TEN-TAP® Programming; IPX4 water-resistant		



Gives you maximum illumination, providing full situational awareness by delivering extraordinary brightness in a wide beam pattern so you can see into those dark corners. Ideal for areas where you need a lot of light to see all around you.

### Additional Features:

- TEN-TAP® Programming - Choice of three user selectable programs: 1.) high/strobe/low; 2.) high only; 3.) low/medium/high
- Uses rechargeable lithium ion battery; also accepts two CR123A lithium batteries or a Li-Ion 18650 rechargeable battery
- Self-adjusting battery cradle secures multiple battery sizes and eliminates battery rattle
- Includes nylon holster and removable pocket clip

#88054 - ProTac HL USB - 120V AC

#22011 - 18650 Charger Kit - 120V AC (includes charging cradle, two 18650 batteries, 120V AC cord)

## ProTac HL® 4 HL®

ProTac HL 4			
<b>Light Source</b>	C4® LED		
<b>Battery</b>	Four CR123A lithium batteries (included) or 18650 rech. batteries		
<b>Case Material</b>	Anodized, machined aluminum		
<b>LUMENS:</b>	HIGH	MEDIUM	LOW
	2,200	600	60
	30,000	8,300	800
<b>CANDELA:</b>	346m	182m	56m
	1.5 hrs	4 hrs	40 hrs
<b>DISTANCE:</b>	1.5 hrs	4 hrs	40 hrs
	1.75 hrs	4.25 hrs	43 hrs
<b>RUN TIME (CR123A):</b>	1.5 hrs	4 hrs	40 hrs
	1.75 hrs	4.25 hrs	43 hrs
<b>RUN TIME (18650):</b>	1.5 hrs	4 hrs	40 hrs
	1.75 hrs	4.25 hrs	43 hrs
<b>Features</b>	TEN-TAP® Programming; IPX7 waterproof to 1m for 30 minutes		



New technology brings you this 2,200 lumen hand-held flashlight with a wide beam pattern that will illuminate an entire area. The dual fuel ProTac HL 4 accepts either CR123A lithium batteries or rechargeable 18650 batteries - multiple power sources reduce down time.

### Additional Features:

- TEN-TAP® Programming - Choice of three user selectable programs: 1.) high/strobe/low; 2.) high only; 3.) low/medium/high
- High for maximum illumination; medium for bright light and longer run time; low for extended run time; strobe for disorienting or signaling
- Self-adjusting battery cradle secures multiple battery sizes and eliminates battery rattle
- Includes nylon holster
- Anti-roll head prevents the light from rolling away

#88060 - ProTac HL 4

#22011 - 18650 Charger Kit - 120V AC (includes charging cradle, two 18650 batteries, 120V AC cord)



## PolyTac®

PolyTac		
Light Source	C4® LED	
Battery	Two CR123A lithium batteries	
Case Material	High-impact, super-tough nylon polymer with a textured grip	
LUMENS: CANDELA: DISTANCE: RUN TIME:	HIGH	LOW
	275	14
	9,500	500
	195m	45m
Features	TEN-TAP® Programming; IPX7 waterproof to 1m for 30 minutes; meets requirements of NFPA 1971-8.6 (2013)	



For this light, we took the blinding virtues of our tactical defense lights and plugged them into a super-tough, heat-resistant nylon polymer body. The result? A compact, exceptionally durable, non-metallic light you can use around electrical panels and equipment, high heat sources or in adverse weather conditions. Small enough to tuck in a pocket or tool pouch, the PolyTac is always handy.

### Additional Features:

- Compact and lightweight - 5.34 in. (13.56 cm); 4.2 oz (121 g)
- Push-button tail switch for convenient, one-handed operation
- TEN-TAP® Programming: Choice of three operating modes: 1.) high/strobe/low; 2.) high only; 3.) low/high

#88850 - PolyTac - Black  
#88853 - PolyTac - Yellow

## Streamlight Jr.® LED

Streamlight Jr. LED		
Light Source	C4® LED	
Battery	Two "AA" alkaline batteries; also accepts "AA" lithium batteries	
Case Material	Anodized, machined aluminum	
LUMENS: CANDELA: DISTANCE: RUN TIME:	Alkaline	Lithium
	140	140
	2,300	2,300
	96m	96m
Features	IPX4 water-resistant; 1m impact resistance tested	



This is a classic personal light featuring a 2 AA-sized aluminum body with non-slip knurled grip. With C4® LED technology, it's brighter than most traditional 2 AA flashlights, and it also has good beam distance capability (96 m). It's small enough to fit easily on your belt or tuck into a tool box when you go out on inspections and perform repairs.

### Additional Features:

- Convenient pocket clip for easy access
- Includes nylon holster
- Optional mounting magnet accessory for hands-free use (sold separately)

#71500 - Streamlight Jr. LED  
#71510 - Magnetic Mounting Clip Accessory

## 3AA ProPolymer® Dualie® Laser

3AA ProPolymer® Dualie® Laser			
Light Source	C4® LED/ 640-650nm red laser		
Battery	Three "AA" alkaline batteries		
Case Material	Non-conductive polymer with rocky stipple texture		
LUMENS: CANDELA: DISTANCE: RUN TIME:	SPOT	LASER	COMBO
	150	<5mW	150
	7,700	---	7,700
	175m	---	175m
Features	Spot beam and red laser; integrated, snag-free pocket clip conforms to body of light; IPX7 waterproof to 1m for 30 minutes		

The first intrinsically safe flashlight featuring a red laser pointer. Along with a focused spot beam, you can see what's ahead of you and illuminate your work area, as well as identify and pinpoint objects at a distance. Intrinsically Safe - Class I & II, Div. 1.

### Additional Features:

- Rugged, integrated, snag-free clip conforms to body of light; grabs onto shirts, pockets and gear for hands-free use
- Dual head switches on either side of the body for easy beam selection and one-handed operation
- Includes three "AA" alkaline batteries; also accepts AA lithium batteries

#68760 - 3AA ProPolymer Dualie Laser - Yellow  
#68089 - Poly Mount Kit (3AA/4AA)

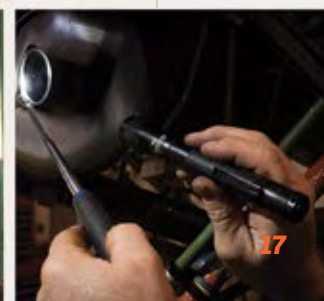
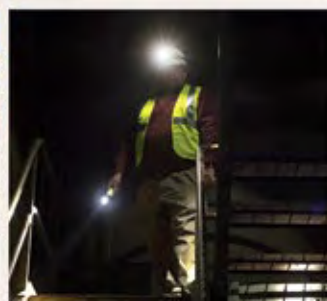


PLANT OPERATIONS

TRANSMISSION & DISTRIBUTION

NATURAL GAS UTILITY

WIND ENERGY



# PLANT OPERATIONS

## Stylus Pro® / Stylus®

	Stylus Pro	Stylus Pro Reach	Stylus
Light Source	C4® LED	C4® LED	High-intensity LED
Battery	Two "AAA" alkaline batteries	Two "AAA" alkaline batteries	Three "AAAA" alkaline batteries
Case Material	Anodized, machined aluminum	Anodized, machined aluminum; polyethylene coated flexible cable	Anodized, machined aluminum
LUMENS:	90	38	11
CANDELA:	860	825	140
DISTANCE:	58m	57m	24m
RUN TIME:	6.5 hrs	8 hrs	24 hrs
Features	IPX4 water-resistant; nylon holster; pocket clip	Cable allows for 14" of reach; individually serialized; mounting magnet; pocket clip	Pocket clip; glare guard; IPX4 water-resistant; 2 meter impact-resistance tested



### Stylus Pro®

The Stylus Pro is the ultimate high-performance pen light. So sleek and compact, it's unbelievable that it provides such incredible output! Use it for close inspections, or shine the light across a room - it provides a beam distance of 58 meters.

#66118 - Stylus Pro

### Stylus Pro Reach®

Often, jobs require light in tight places where regular flashlights can't reach. In these instances, you want the Stylus Pro Reach, which features a flexible cable extension with a C4® LED on the end. You can bend the cable and set it on a flat surface for a work light, or inspect a cylinder bore or heat exchanger, then hang it over a pipe when working on machinery or duct work.

#66418 - Stylus Pro Reach

### Stylus®

Put this ultra-slim penlight in your pocket and take it with you anywhere. With a momentary blink or constant "on" operation, it is ideal for inspections, checking gauges, lighting tight spaces, or looking for that item you dropped in your truck.

#65018 - Stylus Black with White LED

## Stylus Pro® 360

Stylus Pro 360	
Light Source	C4® LED
Battery	Two "AAA" alkaline batteries
Case Material	Anodized, machined aluminum
LUMENS:	65
CANDELA:	430
DISTANCE:	41m
RUN TIME:	6.5 hrs
Features	High strength break away safety lanyard; IPX4 water-resistant; 1m impact-resistance tested; push-button tail switch

This sleek, compact penlight has a lantern feature that provides hands-free use of 360° of light. Small enough to fit in your pocket, it's convenient to take with you anywhere.

#### Additional Features:

- Bezel slides forward to reveal a polycarbonate globe that provides 360° of light
- Bell-shaped rubber sleeve over push-button switch provides stability so the light can stand upright

#66218 - Stylus Pro 360 with two AAA alkaline batteries, nylon holster and lanyard





## Stylus Pro® USB

Stylus Pro USB	
Light Source	C4® LED
Battery	Lithium ion
Case Material	Anodized, machined aluminum
LUMENS:	70
CANDELA:	630
DISTANCE:	50m
RUN TIME:	3.5 hrs
Features	USB rechargeable; IPX4 water-resistant; nylon holster; pocket clip



A sleek, compact, USB rechargeable pen light, the Stylus Pro USB allows you the flexibility of charging on-the-go using virtually any USB port. It fits in your pocket so you can take it with you wherever you go. Perfect for inspections, reading work orders or completing paperwork.

### Additional Features:

- Includes USB cord. Optional 120V AC adapter available
- Lithium ion battery fully recharges in-product in 2.5 hours; rechargeable up to 300 times
- USB port is protected from dirt and grime with water-resistant, protective sleeve (slides back to access port)
- Pocket clip keeps the penlight in place, or wear it on your belt with a tear-resistant, nylon holster (included)

#66134 - Stylus Pro USB with USB cord

#66133 - Stylus Pro USB with USB cord and 120V AC adapter

## ClipMate® USB

ClipMate USB				
Light Source	C4® LED, 620-639nm Red LED			
Battery	Lithium polymer			
Case Material	Durable polymer			
	C4 LOW	C4 HIGH	RED LOW	RED HIGH
LUMENS:	10	70	.2	.5
CANDELA:	50	500	3	9
DISTANCE:	14m	44m	3m	6m
RUN TIME:	24 hrs	3.5 hrs	65 hrs	16 hrs
Features	USB rechargeable; IPX4 water-resistant; 1m impact-resistance tested			



A multi-function, USB rechargeable clip-on light that grabs onto pockets or hats for hands-free use. No need to worry about finding a cord to charge it, as it features a built-in USB charge tab.

### Additional Features:

- Multiple modes:
  - C4 LED: High for bright, white light; Low for lower level lighting and longer run time
  - Red LED with high and low modes; preserves night vision
- Recharges from USB source or AC wall adapter
- LED is mounted at the end of a flexible cable so you can aim the beam where you need it

#61125 - ClipMate USB - Light only

#61126 - Clipmate USB with 120V AC

## MicroStream®

MicroStream	
Light Source	C4® LED
Battery	One "AAA" alkaline battery
Case Material	Anodized, machined aluminum
LUMENS:	45
CANDELA:	420
DISTANCE:	41m
RUN TIME:	2.25 hrs
Features	High strength break away safety lanyard; IPX4 water-resistant; 1m impact-resistance tested; push-button tail switch

The MicroStream is small enough for you to discreetly keep it in your pocket, or clip it to a ball cap for hands-free use. This versatile tool is perfect for supervisors who don't need a flashlight on a daily basis, or for the tradesmen who don't want to be weighed down by larger lights.

### Additional Features:

- Ultra-compact, fits in the palm of your hand - 3.5"
- IPX4 water-resistant; 1 meter impact-resistance tested
- Pocket clip also attaches to brim of your cap for hands-free use

#66318 - MicroStream



PLANT OPERATIONS

TRANSMISSION & DISTRIBUTION

NATURAL GAS UTILITY

WIND ENERGY





# TRANSMISSION & DISTRIBUTION

## E-Flood® LiteBox® HL™

E-Flood LiteBox HL																					
Light Source	Six C4® LEDs																				
Battery	Sealed lead acid																				
Case Material	High-impact thermoplastic housing with rubberized impact bumper																				
	<table border="1"> <thead> <tr> <th></th> <th>HIGH</th> <th>MEDIUM</th> <th>LOW</th> </tr> </thead> <tbody> <tr> <td>LUMENS:</td> <td>3,600</td> <td>2,400</td> <td>1,200</td> </tr> <tr> <td>CANDELA:</td> <td>31,000</td> <td>20,000</td> <td>11,000</td> </tr> <tr> <td>DISTANCE:</td> <td>352m</td> <td>283m</td> <td>210m</td> </tr> <tr> <td>RUN TIME:</td> <td>2 hrs</td> <td>4 hrs</td> <td>6 hrs</td> </tr> </tbody> </table>		HIGH	MEDIUM	LOW	LUMENS:	3,600	2,400	1,200	CANDELA:	31,000	20,000	11,000	DISTANCE:	352m	283m	210m	RUN TIME:	2 hrs	4 hrs	6 hrs
	HIGH	MEDIUM	LOW																		
LUMENS:	3,600	2,400	1,200																		
CANDELA:	31,000	20,000	11,000																		
DISTANCE:	352m	283m	210m																		
RUN TIME:	2 hrs	4 hrs	6 hrs																		
Features	Maximum illumination; 12V DC power cord; toggle switch; cushioned grip handle; 90° rotating head for target lighting																				

When you need maximum illumination with a wide beam to light a work area site like an underground line fault repair or underground switchgear repair, the E-Flood LiteBox HL provides a blast of 3,600 lumens. Economical and compact, it features selectable diffuser settings and three different lighting modes that enable you to set the beam width, intensity and run time needed for your task. Rapid deployment, a 90° tilting head and indefinite run time using its 12V DC power cord ensure that you will always have light where and when you need it.

### Additional Features:

- High lumen beam for maximum illumination
- LEDs don't break or burn out and they provide long run times
- Standard system includes AC and DC charge cords, mounting rack and shoulder strap
- Vehicle mount system includes truck-mountable hard-wire rack and shoulder strap

- #45661 - E-Flood LiteBox HL Standard System - 120V AC/12V DC - Orange
- #45665 - E-Flood LiteBox HL Vehicle Mount - Orange
- #45660 - E-Flood LiteBox HL (Without Charger) - Orange



## E-Spot® LiteBox®

E-Spot LiteBox																
Light Source	Three C4® LEDs within three deep dish parabolic reflectors															
Battery	Sealed lead acid															
Case Material	High-impact thermoplastic housing with rubberized impact bumper															
	<table border="1"> <thead> <tr> <th></th> <th>HIGH</th> <th>LOW</th> </tr> </thead> <tbody> <tr> <td>LUMENS:</td> <td>540</td> <td>330</td> </tr> <tr> <td>CANDELA:</td> <td>55,000</td> <td>32,000</td> </tr> <tr> <td>DISTANCE:</td> <td>469m</td> <td>358m</td> </tr> <tr> <td>RUN TIME:</td> <td>7 hrs</td> <td>15 hrs</td> </tr> </tbody> </table>		HIGH	LOW	LUMENS:	540	330	CANDELA:	55,000	32,000	DISTANCE:	469m	358m	RUN TIME:	7 hrs	15 hrs
	HIGH	LOW														
LUMENS:	540	330														
CANDELA:	55,000	32,000														
DISTANCE:	469m	358m														
RUN TIME:	7 hrs	15 hrs														
Features	Spotlight design; IPX4 water-resistant; push-button switch; cushioned grip handle															

This LED lantern brings you the all-weather durability, reliability and versatility you've become accustomed to in our LiteBox® line with the higher performance of C4® LED technology. The E-Spot LiteBox head tilts more than 90° and swivels almost 360° making it ideal for lighting the top of a pole from the ground, working from a bucket or inspecting for blown fuses.

### Additional Features:

- 469 meter beam distance so you can shine it up a utility pole
- Mode settings allow selection of more light output or extended run times
- Standard system includes AC and DC charge cords, mounting rack and shoulder strap
- Vehicle mount system includes truck-mountable hard-wire rack and shoulder strap

- #45851 - E-Spot LiteBox Standard System - 120V AC/12V DC - Orange
- #45855 - E-Spot LiteBox Vehicle Mount - Orange
- #45856 - E-Spot LiteBox Without Charger - Orange
- #45845 - E-Spot Upgrade Kit



## HID LiteBox®

HID LiteBox							
Light Source	35 watt HID xenon lamp						
Battery	Sealed lead acid						
Case Material	High-impact thermoplastic housing with rubberized impact bumper						
	<table border="1"> <tbody> <tr> <td>LUMENS:</td> <td>3,350</td> </tr> <tr> <td>CANDELA:</td> <td>1,000,000</td> </tr> <tr> <td>RUN TIME:</td> <td>1.75 hrs</td> </tr> </tbody> </table>	LUMENS:	3,350	CANDELA:	1,000,000	RUN TIME:	1.75 hrs
LUMENS:	3,350						
CANDELA:	1,000,000						
RUN TIME:	1.75 hrs						
Features	Deep-dish parabolic reflector produces a long range high intensity beam with optimum peripheral illumination; 12V DC power cord						

With a focused beam of light that illuminates objects 1 mile away, you'll run out of things to see before your run out of light with the HID LiteBox. Our most powerful hand lantern at 1 million candela, its fully articulating head can be aimed precisely at a target. This high intensity search light is a good choice for the "trouble truck" or for storm response teams. The included Flood Lens turns this high powered hand lantern into an effective scene light for underground work and staging activities.

### Additional Features:

- 12V DC power cord provides indefinite run time for scene lighting
- Weatherproof
- Includes removable flood lens and shoulder strap

- #45601 - HID LiteBox Standard System - 120V AC/12V DC - Orange
- #45605 - HID LiteBox Vehicle Mount - Orange
- #45600 - HID LiteBox Without Charger - Orange





People depend on you to make repairs as fast as possible when there are issues with a community's distribution system - especially when caused by the weather. As a result, you need dependable equipment. Whether you're inspecting conductors from the ground or need to strap on hooks to go and make a repair, Streamlight has durable lanterns, headlamps and smaller handheld lights with the long run times and performance your job requires.

## Portable Scene Light

Portable Scene Light			
Light Source	Six C4® LEDs		
Battery	Sealed lead acid		
Case Material	High-impact, waterproof thermoplastic housing		
	HIGH	MEDIUM	LOW
LUMENS:	5,300	2,500	1,300
DISTANCE:	410m	292m	215m
RUN TIME:	4 hrs	9 hrs	18 hrs
Features	Design allows for use in confined spaces and rugged terrain; 12V DC power cord provides unlimited run time and charges batteries while in use		



Rapidly deployed and easily stowed, the Portable Scene Light brings 5,300 lumens to your work area. With its narrow footprint and 72" extension pole, this light goes almost anywhere, from wide open places to tight, confined spaces. It's water-resistant making it ideal for post-storm clean-up and other grueling outdoor environments.

### Additional Features:

- Use it to light your way to your work site then quickly set it up to illuminate the area
- Three lighting modes each with selectable diffuser settings for two beam widths:
  - High for a super-bright flood light
  - Medium for an intense beam and longer run time
  - Low for when a less intense beam is ideal and for longer run time
- Optimum peripheral illumination for scene lighting; 90° swivel neck allows you to aim the beam where you need it
- It provides long run times from 5-18 hours, which will get you through your shift; if necessary, plug it into your truck for indefinite run time (batteries charge while plugged in)
- Extension pole can be used upright to light a large area or horizontally over a ditch, manhole or tunnel access
- It's battery powered so there's no generator producing toxic fumes
- 25 lbs (11.3 kg) provides weight stabilization, but is light enough to carry
- Packs to a compact size (22"; 55.88cm) for easy stowage

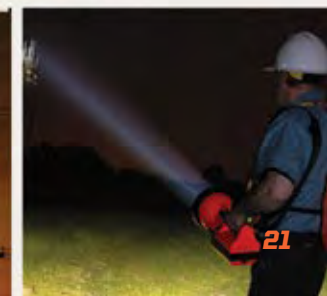
#45670 - Portable Scene Light 120V AC/12V DC - Yellow

PLANT OPERATIONS

TRANSMISSION & DISTRIBUTION

NATURAL GAS UTILITY

WIND ENERGY





# TRANSMISSION & DISTRIBUTION

## Knucklehead®

Div. 2	Flood Model	Spot Model		
Light Source	Two C4® LED	C4® LED		
Battery	Rechargeable NiCd; also accepts 4 "AA" alkaline batteries	Rechargeable NiCd; also accepts 4 "AA" alkaline batteries		
Case Material	Nylon polymer	Nylon polymer		
LUMENS: CANDELA: DISTANCE: RUN TIME:	HIGH	LOW	HIGH	LOW
	200	63	180	55
	1,150	350	11,000	3,300
	68m	37m	210m	115m
	3.5 hrs	16 hrs	3.5 hrs	16 hrs
Features	Floodlight design; IPX4 water-resistant; serialized for positive identification; safety rated: Class I & II, Div. 2	Spotlight design; IPX4 water-resistant; serialized for positive identification; safety rated: Class I & II, Div. 2		



Perfect for maintenance work in a pad-mount transformer, primary metering station or substation control room, the versatile Knucklehead keeps your hands free to do your job. Featuring a 210° articulating head that rotates 360° to the light at any area needed, the Knucklehead stands up, lays down, attaches to belts/harnesses with a spring-loaded clip, hangs from its hook, or adheres to a metal surface with its super-strong magnet (135 lb. pull strength). No more juggling your flashlight and your tools to complete a task.

### Additional Features:

- Flood model: Dual C4® LEDs within a wide reflector produces a smooth floodlight for up-close work
- Spot model: Single C4 LED within a parabolic reflector provides a tighter beam for longer range target illumination
- Four modes: High beam for more brightness; low beam for longer run time; emergency flash for signaling; moonlight for low-level lighting and extended run time
- Yellow flood model features stowable hook; orange models (both flood and spot) feature spring-loaded clip
- Safety rated: Class I & II, Div. 2
- Rechargeable models include an optional 4 "AA" battery carrier for fast battery replacement

### Flood Models

- #90627 - Knucklehead (with hook) AC/DC - Yellow
- #90642 - Knucklehead (with hook) Alkaline - Yellow
- #90657 - Knucklehead (with clip) AC/DC - Orange
- #90644 - Knucklehead (with clip) Alkaline - Orange

### Spot Models

- #90757 - Knucklehead (with clip) AC/DC - Orange
- #90744 - Knucklehead (with clip) Alkaline - Orange

## Div. 2 Headlamps

	Septor®			Trident®			Argo®		
Light Source	Seven ultra-bright white LEDs			One C4® LED, three ultra-bright white LEDs			C4® LED		
Battery	Three "AAA" alkaline batteries			Three "AAA" alkaline batteries			Three "AAA" alkaline batteries		
Case Material	Impact resistant ABS thermoplastic			Impact resistant ABS thermoplastic			Impact resistant ABS thermoplastic		
LUMENS: CANDELA: DISTANCE: RUN TIME:	7 LEDs	3 LEDs	1 LED	C4 LED	3 LEDs	1 LED	HIGH	MEDIUM	LOW
	120	45	13	80	35	11	150	100	45
	900	375	100	4,000	385	120	9,250	6,375	2,750
	60m	35m	20m	126m	39m	22m	190m	160m	103m
	3.5 hrs	10 hrs	55 hrs	5 hrs	10 hrs	53 hrs	3 hrs	4.5 hrs	30 hrs
Features	Adjustable elastic head strap; rubber hard hat strap; battery level indicator; IPX4 water-resistant; 90° tilting head reduces neck fatigue			Adjustable elastic head strap; rubber hard hat strap; battery level indicator; IPX4 water-resistant; 90° tilting head reduces neck fatigue			Adjustable elastic head strap; rubber hard hat strap; battery level indicator; IPX4 water-resistant; 90° tilting head reduces neck fatigue		

### Septor® - Ideal for up-close lighting

When a job requires the use of both hands, the Septor is the headlight of choice. Specifically engineered to maximize run time, it offers 3 lighting modes (1, 3 or 7 LEDs) and a 90° tilting head so you can aim the light where you need it. Septor produces a soft flood light that is designed to minimize eye strain and is ideal for up-close work. It's also safety rated: Class I & II, Div. 2.

#61052 - Septor - Yellow

### Trident® - Ideal for distance & up-close lighting

The Trident is another option for when you're worried about juggling your tools and a flashlight. This headlamp's 90° tilting head can help reduce neck fatigue, while giving you the use of both hands when lifting, carrying and making repairs. It combines a single, distance oriented C4® LED with three ultra-bright high-intensity flood LEDs, giving you multiple lighting choices in a single headlamp. It's also safety rated: Class I & II, Div. 2.

#61050 - Trident - Yellow

### Argo® - Ideal for long-distance lighting

Whether you're climbing, making repairs, trouble shooting or carrying supplies, the last thing you want to worry about is carrying a flashlight. That's why a headlamp like the versatile Argo is a good choice. Three brightness levels give you the best lighting options to suit your needs: High for super-bright, far-reaching beam, medium for longer run times, low for extended run times. It's also safety rated: Class I & II, Div. 2.

#61301 - Argo - Yellow





## Div. 1 Headlamps



	Septor HAZ-LO	Trident HAZ-LO	Argo HAZ-LO
<b>Light Source</b>	Seven ultra-bright white LEDs	One C4® LED, three ultra-bright white LEDs	C4® LED
<b>Battery</b>	Three "AAA" alkaline batteries	Three "AAA" alkaline batteries	Three "AAA" alkaline batteries
<b>Case Material</b>	Impact resistant thermoplastic	Impact resistant thermoplastic	Impact resistant thermoplastic
<b>LUMENS:</b>	LOW	LOW	LOW
	HIGH	HIGH	HIGH
	20	30	20
	85	85	90
<b>CANDELA:</b>	150	300	700
	620	2,600	3,200
<b>DISTANCE:</b>	24m	35m	53m
	50m	102m	113m
<b>RUN TIME:</b>	50 hrs	24 hrs	50 hrs
	8 hrs	8 hrs	8 hrs
<b>Features</b>	Adjustable elastic head strap; rubber hard hat strap; IPX4 water-resistant; 90° tilting head reduces neck fatigue	Adjustable elastic head strap; rubber hard hat strap; IPX4 water-resistant; 90° tilting head reduces neck fatigue	Adjustable elastic head strap; rubber hard hat strap; IPX4 water-resistant; 90° tilting head reduces neck fatigue



### Septor® HAZ-LO® - Ideal for up-close lighting

When a Division 1 work environment has tasks that require the use of both hands, the Septor HAZ-LO is the headlight of choice. It offers low and high lighting modes and a 90° tilting head so you can aim the light where you need it. Septor HAZ-LO produces a soft flood light that is designed to minimize eye strain. Class I & II, Div. 1 safety rated.

#61024 - Septor HAZ-LO - Yellow

### Trident® HAZ-LO® - Ideal for distance and up-close lighting

The Trident is another option for when you're worried about juggling your tools and a Div. 1 flashlight. This headlamp's 90° tilting head can help reduce neck fatigue, while giving you the use of both hands when lifting, carrying and making repairs. It combines a single, distance oriented C4® LED with three ultra-bright high-intensity flood LEDs, giving you multiple lighting choices in a single headlamp. Class I & II, Div. 1 safety rated.

#61025 - Trident HAZ-LO - Yellow

### Argo® HAZ-LO® - Ideal for long-distance lighting

Whether you're climbing, making repairs, trouble shooting or carrying supplies, the last thing you want to worry about is carrying a flashlight. That's why a headlamp like the versatile Argo HAZ-LO is a good choice. Low and high brightness levels give you a choice of lighting options to suit your needs: Low for extended run time, high for super-bright, far-reaching beam. Class I & II, Div. 1 safety rated.

#61026 - Argo HAZ-LO - Yellow

## Double Clutch® USB



Double Clutch				
<b>Light Source</b>	C4® LED			
<b>Battery</b>	Lithium polymer; also accepts 3 AAA alkaline			
<b>Case Material</b>	Polymer construction			
<b>LUMENS:</b>	HIGH/SPOT	LOW/SPOT	HIGH/FLOOD	LOW/FLOOD
	125	30	125	30
<b>CANDELA:</b>	1,700	400	250	70
	82m	40m	31	4m
<b>DISTANCE:</b>	3.5 hrs <sup>(high)</sup>	10 hrs <sup>(high)</sup>	3.5 hrs <sup>(high)</sup>	10 hrs <sup>(high)</sup>
	6 hrs <sup>(low)</sup>	18 hrs <sup>(low)</sup>	6 hrs <sup>(low)</sup>	18 hrs <sup>(low)</sup>
<b>Features</b>	Dual fuel - multiple power sources; USB rechargeable; IPX4 water-resistant; 2m impact-resistance tested			



The Double Clutch USB gives you the flexibility of shifting between beams and modes to fit your task, as well as choosing your battery source. It is also easy to use, even with gloves - just a quick twist of the facecap turns the light on and off, or changes the output from spot to flood.

#### Additional Features:

- Dual-fuel: Powered by USB rechargeable lithium polymer battery; also accepts 3 AAA alkaline or lithium batteries as back-up
- Low-profile construction with optimized center of gravity provides maximum comfort and stability during use
- 60° tilting head reduces neck fatigue
- Includes USB cord, and adjustable elastic and hard hat straps; optional AC wall adapter available

#61600 - Double Clutch with USB Charge Cord - Yellow

#61602 - Double Clutch with 120V AC Charger - Yellow

#61607 - Double Clutch Alkaline - Yellow

PLANT OPERATIONS

TRANSMISSION & DISTRIBUTION

NATURAL GAS UTILITY

WIND ENERGY





# TRANSMISSION & DISTRIBUTION

## HPL Series

Strion® HPL™			
Light Source	C4® LED		
Battery	Lithium ion		
Case Material	Anodized, machined aluminum housing; grooved barrel provides a sure grip		
	HIGH	MEDIUM	LOW
LUMENS:	615	320	160
CANDELA:	40,000	20,000	10,000
DISTANCE:	400m	283m	200m
RUN TIME:	1 hr	2 hrs	3.75 hrs
Features	2m impact-resistance tested; IPX4 water-resistant; serialized for positive identification		

Using a rechargeable flashlight like the Strion HPL can help you save money on batteries when you're using it every day. It was designed for superior distance capability (400m). In addition, four modes allow you to select the right amount of light for your job, extend the run time to last through your shift or strobe for signaling.

### Additional Features:

- Deep-dish parabolic reflector produces a super long-range beam
- Four modes:
  - High beam for a bright, far-reaching beam
  - Medium for bright light, good distance and longer run times
  - Low beam for a less intense beam and longer run times
  - Strobe for signaling or disorienting
- AC/DC chargers allow you to conveniently take the light from the office to the truck
- Lithium ion battery fully recharges in just 3 hours

#74502 - Strion LED HP 120V AC/12V DC  
#74175 - Li Ion Battery - Strion LED Series



Stinger® HPL™			
Light Source	C4® LED		
Battery	NiMH		
Case Material	Anodized, machined aluminum housing with non-slip rubber comfort grip		
	HIGH	MEDIUM	LOW
LUMENS:	740	380	190
CANDELA:	48,000	24,000	12,000
DISTANCE:	438m	310m	219m
RUN TIME:	1.25 hrs	2.5 hrs	4.5 hrs
Features	3m impact-resistance tested; IPX4 water-resistant; serialized for positive identification		

The Stinger HPL is another money-saving option when you're using a flashlight every day. Its rechargeable battery can be charged up to 1,000 times. The HPL stands for "High Performance, High Lumen" and it was designed for superior distance capability (438m). In addition, four modes allow you to select the right amount of light for your task, extend the run time or strobe for signaling.

### Additional Features:

- Deep-dish parabolic reflector produces a super long-range beam
- Four modes:
  - High beam for a bright, far-reaching beam
  - Medium for bright light, good distance and longer run times
  - Low beam for a less intense beam and longer run times
  - Strobe for signaling or disorienting
- AC/DC chargers allow you to conveniently take the light from the office to the truck

#75763 - Stinger HPL 120V AC/12V DC (NiCd)  
#77375 - NiMH Battery - Stinger LED Series  
#75967 - Magnetic Mounting Clip (Stinger Series)



PolyTac® HP		
Light Source	C4® LED	
Battery	Two CR123A lithium batteries	
Case Material	High-impact, super-tough nylon polymer with a superior grip texture to provide a comfortable but slip resistant feel	
	HIGH	LOW
LUMENS:	275	14
CANDELA:	19,000	1,000
DISTANCE:	275m	63m
RUN TIME:	3 hrs	56 hrs
Features	IPX7 waterproof to 1 m for 30 minutes	

Superior beam distance capability in a durable, lightweight, compact package! It easily illuminates items at a distance so you can check the lines from the ground before climbing up.

### Additional Features:

- Deep reflector produces 275m beam
- TEN-TAP® Programming: Choice of three operating modes:
  - 1.) high/strobe/low; 2.) high only; 3.) low/high;
  - High for a super-bright, far-reaching beam
  - Low for when less light is needed and for longer run time
  - Strobe for disorienting or signaling
- Non-conductive polymer construction - 3m impact resistance tested, if you drop it, it will still perform
- Compact design - 5.9" (14.98 cm) fits conveniently in your tool bag
- Pocket clip keeps the flashlight securely in place
- Lightweight polymer construction won't weigh you down - 5.2 oz (148g)

#88860 - PolyTac HP - Black  
#88863 - PolyTac HP - Yellow  
#99075 - Optional rubber helmet strap (for hands-free lighting)





# ProTac HL<sup>®</sup> 4 HL<sup>®</sup>

ProTac HL 4		
Light Source	C4 <sup>®</sup> LED	
Battery	Four CR123A lithium batteries (included) or 18650 rech. batteries	
Case Material	Anodized, machined aluminum	
	HIGH	MEDIUM
LUMENS:	2,200	600
CANDELA:	30,000	8,300
DISTANCE:	346m	182m
RUN TIME (CR123A):	1.5 hrs	4 hrs
RUN TIME (18650):	1.75 hrs	4.25 hrs
Features	TEN-TAP <sup>®</sup> Programming; IPX7 waterproof to 1m for 30 minutes	



New technology brings you this 2,200 lumen hand-held flashlight with a wide beam pattern that will illuminate an entire area. The dual fuel ProTac HL 4 accepts either CR123A lithium batteries or rechargeable 18650 batteries - multiple power sources reduce down time.

### Additional Features:

- TEN-TAP<sup>®</sup> Programming - Choice of three user selectable programs: 1.) high/strobe/low; 2.) high only; 3.) low/medium/high
- High for maximum illumination; medium for bright light and longer run time; low for extended run time; strobe for signaling
- Self-adjusting battery cradle secures multiple battery sizes and eliminates battery rattle
- Includes nylon holster

#88060 - ProTac HL 4

#22011 - 18650 Charger Kit - 120V AC (includes charging cradle, 2 batteries, 120V AC cord)

# 4AA ProPolymax<sup>®</sup>

4AA ProPolymax		
Light Source	C4 <sup>®</sup> LED	
Battery	Four "AA" alkaline batteries	
Case Material	Non-conductive polymer	
	HIGH	LOW
LUMENS:	300	50
CANDELA:	17,000	2,500
DISTANCE:	261m	100m
RUN TIME:	2.75 hrs	24 hrs
Features	Sealed switch design prevents corrosion of the contacts; IP67 dust-tight and waterproof to 1m for 30 minutes; IPX4 for water spray, wrist lanyard connection	



All weather durability and high performance are key features of a general purpose utility light for a line crew. The 4AA ProPolymax is a tough as nails, super-bright lighting tool that will cut through the darkness and endure all kinds of torture.

### Additional Features:

- TEN-TAP<sup>®</sup> Programming - Customize the light output to best suit your needs: high/low/strobe, high only or low/high
- Push-button switch: Linemen never have a free hand - you always have one hand on your light and one on your gear so we made this flashlight easy to operate with one hand
- High-performance, anti-static, impact-resistant, thermoplastic body is resistant to chemicals and solvents, and it's waterproof - perfect for use in damp, dirty, grueling environments
- A tight, 261m beam reach helps you see into those dark, out-of-the-way places. Whether you're inspecting a pole-top transformer, looking for a cracked insulator, or checking a vault, we have you covered
- Safety rated: Class I & II, Division 2

#68820 - 4AA ProPolyMax - Yellow

#68088 - Belt Clip Accessory

#68089 - Poly Mount Kit



# Waypoint<sup>®</sup>

	Alkaline Model	Rechargeable Model
Light Source	C4 <sup>®</sup> LED	C4 <sup>®</sup> LED
Battery	Four "C" alkaline batteries (sold separately)	Lithium ion
Case Material	Polycarbonate with cushioned grip handle	Polycarbonate with cushioned grip handle
	HIGH	LOW
LUMENS:	550	40
CANDELA:	100,000	7,900
DISTANCE:	625m	178m
RUN TIME:	10 hrs	82 hrs
Features	12V DC power cord provides indefinite run time; IPX4 water-resistant; emergency signal runs 82 hours; trigger-style power switch; rotary mode selection switch	IPX8 submersible 2m for 30 minutes; trigger-style power switch; rotary mode selection switch; it floats

Use the ultra-bright, long-distance beam of the Waypoint as a spotlight to illuminate far-off objects. This pistol-grip light has a trigger-style switch, as well as an integrated stand so that you can set it down for hands-free lighting. These are the perfect tools for line inspections, looking for addresses or any other objects you can't get close to easily.

### Additional Features:

- Available in alkaline and rechargeable models
- Long-range targeting beam (alkaline: 625m; rechargeable: 678m) for making line inspections or looking for addresses
- Secondary rotary switch to access three lighting modes:
  - High, low, emergency signal (alkaline model)
  - High, medium, low (rechargeable model)



#44900 - Waypoint (alkaline model) with 12V DC power cord - Yellow

#44902 - Waypoint (alkaline model) with 12V DC power cord - Black

#44910 - Waypoint (rechargeable model) with 120V AC - Yellow

#44911 - Waypoint (rechargeable model) with 120V AC - Black

#44909 - 12V DC Cord (for rechargeable model)

PLANT OPERATIONS

TRANSMISSION & DISTRIBUTION

NATURAL GAS UTILITY

WIND ENERGY





# NATURAL GAS UTILITY

## ProPolymer® Dualie® Series



3AA ProPolymer® Dualie®				3AA ProPolymer® Dualie® Laser		
Light Source	C4® LED			C4® LED/ 640-650nm red laser		
Battery	Three "AA" alkaline batteries			Three "AA" alkaline batteries		
Case Material	Non-conductive polymer with rocky stipple texture			Non-conductive polymer with rocky stipple texture		
LUMENS: CANDELA: DISTANCE: RUN TIME:	SPOT	FLOOD	COMBO	SPOT	LASER	COMBO
	140	140	245	150	<5mW	150
	7,300	80	7,300	7,700	---	7,700
	171m	18m	171m	175m	---	175m
	18 hrs	18 hrs	9 hrs	17 hrs	70 hrs	12 hrs
Features	Spot and flood beam; integrated, snag-free pocket clip conforms to body of light; IPX7 waterproof to 1m for 30 minutes			Spot beam and red laser; integrated, snag-free pocket clip conforms to body of light; IPX7 waterproof to 1m for 30 minutes		

### 3AA PROPOLYMER® DUALIE®

See what's ahead of you and right in front of your feet with the 3AA ProPolymer Dualie. Its bright light, which shines both ahead of you and downward, helps you avoid slips, trips and falls. **INTRINSICALLY SAFE.** Safety rated - Class I, II, Div. 1, Groups A, B, C, D, E, F, G; Class III; CL I, ZN 0, IIC; Exia; T-Code: T4.

- #68750 - 3AA ProPolymer Dualie - Yellow
- #68751 - 3AA ProPolymer Dualie w/o batteries - Yellow
- #68752 - 3AA ProPolymer Dualie - Black
- #68753 - 3AA ProPolymer Dualie w/o batteries - Black

### 3AA PROPOLYMER® DUALIE® LASER

Intrinsically safe flashlight featuring a red laser pointer. Along with a focused spot beam, you can see what's ahead of you and illuminate your work area, as well as identify and pinpoint objects at a distance. **INTRINSICALLY SAFE.** Safety rated - Class I, II, Div. 1, Groups A, B, C, D, E, F, G; Class III; CL I, ZN 0, IIC; Exia; T-Code: T4

- #68760 - 3AA ProPolymer Dualie Laser - Yellow
- #68762 - 3AA ProPolymer Dualie Laser - Black
- #68089 - Poly Mount Kit (3AA/4AA)



## 3AA ProPolymer® HAZ-LO®



3AA ProPolymer HAZ-LO	
Light Source	C4® LED
Battery	Three "AA" alkaline batteries
Case Material	Non-conductive polymer
LUMENS: CANDELA: DISTANCE: RUN TIME:	120
	14,000
	237m
	6.5 hrs
Features	IP67 rated for dust-tight and waterproof to 1m for 30 minutes; IPX4 for water spray; sealed switch protected from battery leakage; wrist lanyard connection

Working in this industry, you know you can't be afraid to get your hands, and your tools, wet or dirty. With the 3AA ProPolymer HAZ-LO, you don't have to worry, because this tough, durable flashlight will keep shining even in the most grueling environments. With a C4 LED, you'll have a bright light, too.

#### Additional Features:

- UL and C-UL: Class I, Division 1, Groups A,B,C,D; Class II, Division 1, Groups E,F,G; Class III; Exia; Temperature Code T4
- Non-conductive, shock-resistant and corrosion-proof
- Ergonomically-shaped grip for comfort
- Optional Poly Mount Kit mounts to hard hats for hands-free use

- #68720 - 3AA ProPolymer HAZ-LO - Yellow
- #68088 - Belt Clip Accessory
- #68089 - Poly Mount Kit



## 3C ProPolymer® HAZ-LO®



3C ProPolymer HAZ-LO	
Light Source	C4® LED
Battery	Three "C" alkaline batteries
Case Material	Non-conductive polymer
LUMENS: CANDELA: DISTANCE: RUN TIME:	150
	7,000
	167m
	18 hrs
Features	IP67 rated for dust-tight and waterproof to 1m for 30 minutes; IPX4 for water spray; sealed switch protected from battery leakage; spring-loaded pocket clip grabs onto belts and gear

No need to worry about whether you can use the 3C ProPolymer HAZ-LO in the field - this light has a Class 1, Division 1 safety rating. Perfect for use in wet or dirty environments, the polymer engineering resin is both impact-resistant and waterproof. Use the attached clip to keep this light in a pocket and have it ready whenever you need to use it.

#### Additional Features:

- UL and C-UL: Class I, Division 1, Groups A,B,C,D; Class II, Division 1, Groups E,F,G; Class III; Exia; Temperature Code T4
- MSHA Permissible Flashlight Approval No. 20-A130003-0
- Intrinsic Safety in methane-air mixtures only
- Larger size makes it suited for situations where gloves are typically worn
- Non-conductive, shock-resistant and corrosion-proof

- #33820 - 3C ProPolymer HAZ-LO - Yellow





Natural gas utility work is one that can be tough, dirty and hard on tools. You need those tools to take the punishment as well as safe be to use on the job. This includes your flashlights, and Streamlight has a number of lighting tools with a Class I, Division 1 safety approval that not only cut through the darkness but can take the punishment of life in the field.

### 3N ProPolymer® LED



3N ProPolymer LED	
Light Source	C4® LED
Battery	Three "N" alkaline batteries
Case Material	Super-tough, non-conductive nylon polymer
LUMENS:	30
RUN TIME:	120 hrs
Features	Waterproof; wrist lanyard connection; integrated pocket clip



The 3N ProPolymer LED is the perfect choice when you don't need a large light, but don't want to compromise on brightness or run time. At only 2.1 oz., it is easy to carry in your pocket or, if you have the optional rubber helmet strap accessory, to wear on your hardhat when a job needs both hands. Bring this light with you when you need to stop and check a meter, the serial number on a furnace or the part number off a fitting.

**Additional Features:**

- Safety Rated Intrinsic Safety for Hazardous Locations; Class I & II, Div. 1, Groups A,B,C,D,F,G; Class III T4A "Classified"/ "Exia"
- Impact-resistant polymer body and face cap
- Momentary blink or constant "on" tail switch

#62202 - 3N ProPolymer LED with White LEDs  
 #99075 - Rubber Hard Hat Strap

### 2AA ProPolymer® HAZ-LO®



2AA ProPolymer HAZ-LO	
Light Source	C4® LED
Battery	Two "AA" alkaline batteries
Case Material	Non-conductive polymer
LUMENS:	65
CANDELA:	2,300
DISTANCE:	96m
RUN TIME:	24 hrs
Features	Wrist lanyard connection; integrated pocket clip; Class I & II, Div 1



A lightweight flashlight with a reasonable distance capability (96 meters), the 2AA ProPolymer LED is a good choice for operations crews who need a general purpose light. It's compact enough to fit in your pocket with a durable, super-tough nylon housing that beats out most entry-level flashlights.

**Additional Features:**

- IPX7 waterproof
- Safety rated - Class I & II, Div 1
- MSHA permissible flashlight. Approval No. 20-A140002-0. Tested for Intrinsic Safety in Methane-Air mixtures only

#67101 - 2AA ProPolymer HAZ-LO - Yellow

### PolyStinger® LED HAZ-LO®



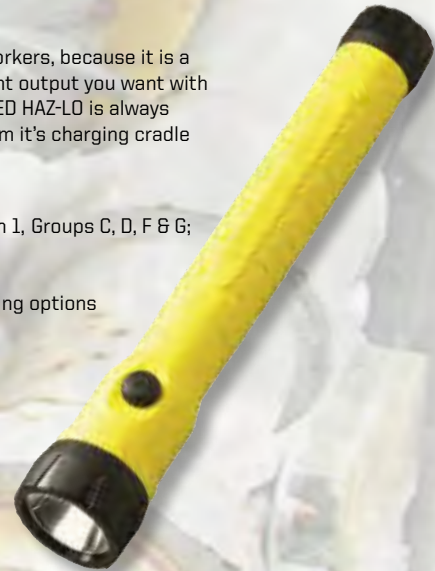
PolyStinger LED HAZ-LO		
Light Source	C4® LED	
Battery	NiCd	
Case Material	Super-tough, non-conductive nylon polymer	
LUMENS:	HIGH	LOW
CANDELA:	130	50
DISTANCE:	15,000	5,700
RUN TIME:	245m	151m
	4 hrs	12 hrs
Features	Compact, snap-in charger holder with charge indicator mounts in any position; 3 meter impact-resistance tested; serialized for positive identification	

The PolyStinger LED HAZ-LO is a good choice for gas utility workers, because it is a durable, safety-rated, rechargeable light that delivers the light output you want with the safety ratings you need! The rechargeable PolyStinger LED HAZ-LO is always ready for a long night on a repair team, just grab the light from it's charging cradle and go to work, for up to 12 hours!

**Additional Features:**

- USTC Division 1 hazardous location listed: Class I, II, Division 1, Groups C, D, F & G; Class I, Division 2, Groups A, B, C & D; Class III, 138°C (T3C)
- Chemical and corrosion-resistant
- Can be charged in the shop or the truck with AC & DC charging options

#76412 - PolyStinger LED HAZ-LO 120V AC/DC - Yellow



- PLANT OPERATIONS
- TRANSMISSION & DISTRIBUTION
- NATURAL GAS UTILITY
- WIND ENERGY





# NATURAL GAS UTILITY

## Knucklehead® / Knucklehead® HAZ-LO®



Div 2	Flood Model		Spot Model		HAZ-LO	Flood Model		Spot Model	
<b>Light Source</b>	Two C4® LEDs		C4® LED		<b>Light Source</b>	Two C4® LEDs		C4® LED	
<b>Battery</b>	Rechargeable NiCd; also accepts 4 "AA" alkaline batteries		Rechargeable NiCd; also accepts 4 "AA" alkaline batteries		<b>Battery</b>	Rechargeable NiCd; also accepts 4 "AA" alkaline batteries		Rechargeable NiCd; also accepts 4 "AA" alkaline batteries	
<b>Case Material</b>	Nylon polymer		Nylon polymer		<b>Case Material</b>	Nylon polymer		Nylon polymer	
<b>LUMENS:</b> <b>CANDELA:</b> <b>DISTANCE:</b> <b>RUN TIME:</b>	<b>HIGH</b>	<b>LOW</b>	<b>HIGH</b>	<b>LOW</b>	<b>LUMENS:</b> <b>CANDELA:</b> <b>DISTANCE:</b> <b>RUN TIME:</b>	<b>HIGH</b>	<b>LOW</b>	<b>HIGH</b>	<b>LOW</b>
	200	63	180	55		163	50	150	55
	1,150	350	11,000	3,300		730	230	12,900	4,300
	68m	37m	210m	115m		54m	30m	227m	131m
<b>Features</b>	Floodlight design; IPX4 water-resistant; safety rated: Class I & II, Div. 2		Spotlight design; IPX4 water-resistant; safety rated: Class I & II, Div. 2		<b>Features</b>	Floodlight design; IPX4 water-resistant; safety rated: Class I & II, Div. 1		Spotlight design; IPX4 water-resistant; safety rated: Class I & II, Div. 1	



When servicing a meter, furnace or regulator system in the dark, nothing is more useful than the safety-rated Knucklehead work light. Featuring a 210° articulating head that rotates 360° to aim the light at any area needed. Multiple hands-free uses: stand it up, lay it down, attach it to belts or harnesses with a spring-loaded clip, hang it from its hook, or adhere it to a metal surface with its super-strong magnet (135 lbs of pull strength). No more putting a flashlight in your mouth to complete a task.

### Additional Features:

- Flood model: Dual C4® LEDs within a wide reflector produces a smooth floodlight for up-close work
- Spot model: Single C4 LED within a parabolic reflector provides a tighter beam for longer range target illumination
- Four modes:
  - High beam for more brightness
  - Low beam for longer run time
  - Emergency flash for signaling
  - Moonlight for low-level lighting and extended run time
- Features either stowable hook or spring-loaded clip
- Rechargeable models include an optional 4 "AA" battery carrier for fast battery replacement
- Safety rated:
  - Div 2 models: Class I, Division 2, Groups A,B,C,D; Class II, Division 2, Groups F,G; Class III, Temp Code: T4
  - HAZ-LO (Div 1) models: Class I & II, Division 1, Groups C,D,F,G; Class I, Division 2, Groups A,B,C,D; Class III, T4
  - MSHA Permissible Flashlight; Approval. No. 20-4140001-0: Tested for Intrinsic Safety in Methane-Air mixtures only. Charge or replace batteries in fresh air only

### Division 2 Models

#### Flood Models

- #90627 - Knucklehead (with hook) 120V AC/12V DC - Yellow
- #90642 - Knucklehead (with hook) Alkaline - Yellow
- #90657 - Knucklehead (with clip) 120V AC/12V DC - Orange
- #90644 - Knucklehead (with clip) Alkaline - Orange

#### Spot Models

- #90757 - Knucklehead (with clip) 120V AC/12V DC - Orange
- #90744 - Knucklehead (with clip) Alkaline - Orange

### HAZ-LO (Division 1) Models

#### Flood Models

- #91627 - Knucklehead (with hook) 120V AC/12V DC - Yellow
- #91642 - Knucklehead (with hook) Alkaline - Yellow
- #91657 - Knucklehead (with clip) 120V AC/12V DC - Orange
- #91644 - Knucklehead (with clip) Alkaline - Orange

#### Spot Models

- #91727 - Knucklehead (with hook) 120V AC/12V DC - Yellow
- #91742 - Knucklehead (with hook) Alkaline - Yellow
- #91757 - Knucklehead (with clip) 120V AC/12V DC - Orange
- #91744 - Knucklehead (with clip) Alkaline - Orange



## Div. 1 Headlamps



	Septor HAZ-LO	Trident HAZ-LO	Argo HAZ-LO
<b>Light Source</b>	Seven ultra-bright white LEDs	One C4® LED, three ultra-bright white LEDs	C4® LED
<b>Battery</b>	Three "AAA" alkaline batteries	Three "AAA" alkaline batteries	Three "AAA" alkaline batteries
<b>Case Material</b>	Impact resistant thermoplastic construction	Impact resistant thermoplastic construction	Impact resistant thermoplastic construction
<b>LUMENS:</b> <b>CANDELA:</b> <b>DISTANCE:</b> <b>RUNTIME:</b>	<b>LOW</b>	<b>LOW</b>	<b>LOW</b>
	<b>HIGH</b>	<b>HIGH</b>	<b>HIGH</b>
	20	30	20
	85	85	90
	150	300	700
620	2,600	3,200	
24m	35m	53m	
50m	102m	113m	
50 hrs	24 hrs	50 hrs	
8 hrs	8 hrs	8 hrs	
<b>Features</b>	Adjustable elastic head strap; rubber hard hat strap; IPX4 water-resistant; 90° tilting head reduces neck fatigue	Adjustable elastic head strap; rubber hard hat strap; IPX4 water-resistant; 90° tilting head reduces neck fatigue	Adjustable elastic head strap; rubber hard hat strap; IPX4 water-resistant; 90° tilting head reduces neck fatigue



ETL: Class 1, Division 1, Groups A,B,C,D;  
Class II, Division 1, Groups E,F,G; Class III, T-Class: T4 Exia

### Septor® HAZ-LO® - Ideal for up-close lighting

When a Division 1 work environment has tasks that require the use of both hands, the Septor HAZ-LO is the headlight of choice. It offers low and high lighting modes and a 90° tilting head so you can aim the light where you need it. Septor HAZ-LO produces a soft flood light that is designed to minimize eye strain. Class I & II, Div. 1 safety rated.

#61024 - Septor HAZ-LO - Yellow

### Trident® HAZ-LO® - Ideal for distance and up-close lighting

The Trident is another option for when you're worried about juggling your tools and a Div. 1 flashlight. This headlamp's 90° tilting head can help reduce neck fatigue, while giving you the use of both hands when lifting, carrying and making repairs. It combines a single, distance oriented C4® LED with three ultra-bright high-intensity flood LEDs, giving you multiple lighting choices in a single headlamp. Class I & II, Div. 1 safety rated.

#61025 - Trident HAZ-LO - Yellow

### Argo® HAZ-LO® - Ideal for long-distance lighting

Whether you're climbing, making repairs, trouble shooting or carrying supplies, the last thing you want to worry about is carrying a flashlight. That's why a headlamp like the versatile Argo HAZ-LO is a good choice. Low and high brightness levels give you a choice of lighting options to suit your needs: Low for extended run time, high for super-bright, far-reaching beam. Class I & II, Div. 1 safety rated.

#61026 - Argo HAZ-LO - Yellow

## 3AA HAZ-LO® Headlamp



3AA HAZ-LO Headlamp	
<b>Light Source</b>	C4® LED
<b>Battery</b>	Three "AAA" alkaline batteries
<b>Case Material</b>	Impact-resistant ABS case
<b>LUMENS:</b>	120
<b>CANDELA:</b>	6,800
<b>DISTANCE:</b>	165m
<b>RUN TIME:</b>	11 hrs
<b>Features</b>	Includes both elastic headstrap and rubber hard hat strap; 90° tilting head prevents neck fatigue; water resistant

Juggling a light when you're trying to work can be a hassle. When you wear a headlamp such as the 3AA HAZ-LO, you can have both hands free and still have the light you need for the job. Engineered to meet the stringent requirements of Division 1 locations, it gives you exceptional light output (120 lumens) and a long run time while remaining so lightweight - 4.5 ounces - that you'll barely know you're wearing it.

#### Additional Features:

- Safety rated:
  - UL and C-UL: Class I, Div. 1, Groups A, B, C, D; Class II, Div. 1, Groups E, F, G; Class III, T4, "Classified"/"Exia"
  - MSHA: Permissible for use in Gassy Mines, Methane/air only. Appr. No. 20-A070001-0
- Impact-resistant housing
- Lightweight - only 4.5 ounces

#61200 - 3AA HAZ-LO Headlamp

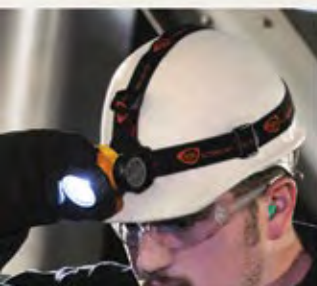


PLANT OPERATIONS

TRANSMISSION & DISTRIBUTION

NATURAL GAS UTILITY

WIND ENERGY





# WIND ENERGY

## HL® Series HL®

	Strion LED HL®			Stinger LED HL®		
<b>Light Source</b>	C4® LED			C4® LED		
<b>Battery</b>	Rechargeable Lithium ion			Rechargeable NiMH		
<b>Case Material</b>	Anodized, machined aluminum			Anodized, machined aluminum		
	HIGH	MEDIUM	LOW	HIGH	MEDIUM	LOW
<b>LUMENS:</b>	500	250	125	640	340	170
<b>CANDELA:</b>	10,000	5,000	2,500	22,000	11,000	5,500
<b>DISTANCE:</b>	200m	141m	100m	297m	210m	148m
<b>RUN TIME:</b>	1 hr	2hrs	3.5 hrs	1.25 hrs	2 hrs	4 hrs
<b>Features</b>	Maximum illumination with a wide beam; IPX4 water-resistant; compact; snap-in charger with charge indicator mounts in any position; serialized for positive identification			Maximum illumination with a wide beam; Li-Ion battery charges in 3 hours; IPX4 water-resistant; serialized for positive identification		

When you need maximum illumination with a wide beam to search a large area, the rechargeable, high lumen flashlights provide a blast of 500+ lumens with 200+ meters of beam distance. Three modes allow you to select the right amount of light for your job or extend the run time or use strobe to signal your location.

### Additional Features:

- Deep-dish parabolic reflector produces a concentrated beam with optimum peripheral illumination
- High for maximum illumination
- Medium for bright light and longer run time
- Low for a less intense beam and extended run time
- Strobe signals your location
- AC/DC chargers allow you to conveniently take the light from the office to the truck

- #74752 - Strion LED HL 120V AC/12V DC
- #75430 - Stinger LED HL 120V AC/12V DC
- #74175 - Li Ion Battery - Strion LED Series
- #75175 - NiCd Battery - Stinger LED Series
- #77375 - NiMH Battery - Stinger LED Series
- #75967 - Magnetic Mounting Clip (Stinger Series)



## HPL Series

	Strion® HPL™			Stinger® HPL™		
<b>Light Source</b>	C4® LED			C4® LED		
<b>Battery</b>	Rechargeable Lithium ion			Rechargeable NiCd or NiMH		
<b>Case Material</b>	Anodized, machined aluminum with grooved barrel for a sure grip			Anodized, machined aluminum with non-slip rubber comfort grip		
	HIGH	MEDIUM	LOW	HIGH	MEDIUM	LOW
<b>LUMENS:</b>	615	320	160	740	380	190
<b>CANDELA:</b>	40,000	20,000	10,000	48,000	24,000	12,000
<b>DISTANCE:</b>	400m	283m	200m	438m	310m	219m
<b>RUN TIME:</b>	1 hr	2 hrs	3.75 hrs	1.25 hrs	2.5 hrs	4.5 hrs
<b>Features</b>	2m impact-resistance tested; IPX4 water-resistant; serialized for positive identification			Li-Ion battery charges in 3 hours; 3m impact-resistance tested; IPX4 water-resistant; serialized for positive identification		

Using rechargeable lights can help you save money on batteries when you're using a flashlight every day. HPL stands for "High Performance, High Lumen" delivers superior distance capability (Strion HPL: 400m; StingerHPL: 438m). Three modes allow you to select the right amount of light for your job or extend the run or use strobe for signaling your location.

### Additional Features:

- Deep-dish parabolic reflector produces a super long-range beam
- Four modes:
  - High for a bright, far-reaching beam
  - Medium for bright light, good distance and longer run time
  - Low for a less intense beam and longer run times
  - Strobe for signaling or disorienting
- AC/DC chargers allow you to conveniently take the light from the office to the truck

- #74502 - Strion HPL 120V AC/12V DC
- #75763 - Stinger HPL 120V AC/12V DC (NiCd)
- #74175 - Li Ion Battery - Strion LED Series
- #77375 - NiMH Battery - Stinger LED Series
- #75967 - Magnetic Mounting Clip (Stinger Series)



## Stinger® LED

Stinger LED			
<b>Light Source</b>	C4® LED		
<b>Battery</b>	Rechargeable NiCd or NiMH		
<b>Case Material</b>	Anodized, machined aluminum with rubber non-slip comfort grip		
	HIGH	MEDIUM	LOW
<b>LUMENS:</b>	350	175	55
<b>CANDELA:</b>	24,000	12,000	6,000
<b>DISTANCE:</b>	310m	219m	155m
<b>RUN TIME:</b>	2 hrs	3.75 hrs	7.25 hrs
<b>Features</b>	Designed for the broadest range of lighting needs at the best value; IPX4 water-resistant		

When your job requires a lighting tool designed for the broadest range of lighting applications, the Stinger LED is the flashlight for you. It provides a 310m beam reach as well as bright side light. In addition, three modes and strobe allow you to select the right amount of light for your job or extend the run time.

### Additional Features:

- AC/DC chargers allow you take the Stinger LED from the office to the truck for field work
- Produces a concentrated beam with optimum peripheral illumination
- IPX4 water-resistant
- 3 meter impact-resistance tested

- #75713 - Stinger LED 120V AC/12V DC (NiCd)
- #75175 - NiCd Battery - Stinger LED Series
- #77375 - NiMH Battery - Stinger LED Series
- #75967 - Magnetic Mounting Clip





Wind energy may be a clean energy source, but the work you do in this industry often can be dirty, dark and dangerous. You may be working on the ground or climbing up the tower of a turbine, but either way, you need a flashlight that will help you do your job. Whether you need a handheld lantern, headlamp or a lightweight flashlight to tuck in your pocket, Streamlight has a light that will provide a bright light and long run time.

## PolyStinger® LED

PolyStinger LED																					
Light Source	C4® LED																				
Battery	Rechargeable NiCd or NiMH																				
Case Material	Super-tough, non-conductive nylon polymer with non-slip rubberized comfort grip																				
	<table border="1"> <thead> <tr> <th></th> <th>HIGH</th> <th>MEDIUM</th> <th>LOW</th> </tr> </thead> <tbody> <tr> <td>LUMENS:</td> <td>385</td> <td>195</td> <td>95</td> </tr> <tr> <td>CANDELA:</td> <td>26,000</td> <td>13,000</td> <td>6,500</td> </tr> <tr> <td>DISTANCE:</td> <td>322m</td> <td>228m</td> <td>161m</td> </tr> <tr> <td>RUN TIME:</td> <td>2 hrs</td> <td>3.75 hrs</td> <td>7.25 hrs</td> </tr> </tbody> </table>		HIGH	MEDIUM	LOW	LUMENS:	385	195	95	CANDELA:	26,000	13,000	6,500	DISTANCE:	322m	228m	161m	RUN TIME:	2 hrs	3.75 hrs	7.25 hrs
	HIGH	MEDIUM	LOW																		
LUMENS:	385	195	95																		
CANDELA:	26,000	13,000	6,500																		
DISTANCE:	322m	228m	161m																		
RUN TIME:	2 hrs	3.75 hrs	7.25 hrs																		
Features	Designed for a broad range of lighting needs at the best value; Lightweight, non-conductive, IPX4 water-resistant																				

When working in a tower, two factors of your job are important: durability and run time. Constructed of super-tough, non-conductive nylon polymer, the PolyStinger LED delivers a combination of rechargeability and C4® LED technology, which provides the assurance that the light is always ready to provide the brightness and run time you need to get through your shift.

### Additional Features:

- High, medium, low and strobe modes
- Non-slip rubberized comfort grip
- IPX4 water-resistant
- Durable - 3 meter impact resistance tested, if you drop it, it will still perform

#76163 - PolyStinger LED 120V AC/12V DC (NiCd) - Yellow

#76113 - PolyStinger LED 120V AC/12V DC (NiCd) - Black

#75175 - NiCd Battery - Stinger LED Series

#77375 - NiMH Battery - Stinger LED Series



## Waypoint®

	Alkaline Model	Rechargeable Model																																			
Light Source	C4® LED	C4® LED																																			
Battery	Four "C" alkaline batteries (sold separately)	Lithium ion																																			
Case Material	Polycarbonate with cushioned-grip handle	Polycarbonate with cushioned-grip handle																																			
	<table border="1"> <thead> <tr> <th></th> <th>HIGH</th> <th>LOW</th> </tr> </thead> <tbody> <tr> <td>LUMENS:</td> <td>550</td> <td>40</td> </tr> <tr> <td>CANDELA:</td> <td>100,000</td> <td>7,900</td> </tr> <tr> <td>DISTANCE:</td> <td>625m</td> <td>178m</td> </tr> <tr> <td>RUN TIME:</td> <td>10 hrs</td> <td>82 hrs</td> </tr> </tbody> </table>		HIGH	LOW	LUMENS:	550	40	CANDELA:	100,000	7,900	DISTANCE:	625m	178m	RUN TIME:	10 hrs	82 hrs	<table border="1"> <thead> <tr> <th></th> <th>HIGH</th> <th>MEDIUM</th> <th>LOW</th> </tr> </thead> <tbody> <tr> <td>LUMENS:</td> <td>1,000</td> <td>550</td> <td>35</td> </tr> <tr> <td>CANDELA:</td> <td>115,000</td> <td>60,000</td> <td>10,000</td> </tr> <tr> <td>DISTANCE:</td> <td>678m</td> <td>490m</td> <td>200m</td> </tr> <tr> <td>RUN TIME:</td> <td>3 hrs</td> <td>6 hrs</td> <td>80 hrs</td> </tr> </tbody> </table>		HIGH	MEDIUM	LOW	LUMENS:	1,000	550	35	CANDELA:	115,000	60,000	10,000	DISTANCE:	678m	490m	200m	RUN TIME:	3 hrs	6 hrs	80 hrs
	HIGH	LOW																																			
LUMENS:	550	40																																			
CANDELA:	100,000	7,900																																			
DISTANCE:	625m	178m																																			
RUN TIME:	10 hrs	82 hrs																																			
	HIGH	MEDIUM	LOW																																		
LUMENS:	1,000	550	35																																		
CANDELA:	115,000	60,000	10,000																																		
DISTANCE:	678m	490m	200m																																		
RUN TIME:	3 hrs	6 hrs	80 hrs																																		
Features	12V DC power cord provides indefinite run time; IPX4 water-resistant; emergency signal runs 82 hours; trigger-style power switch; rotary mode selection switch	IPX8 submersible 2m for 30 minutes; trigger-style power switch; rotary mode selection switch; it floats																																			



Before climbing up a tower, use the ultra-bright, long-distance beam of the Waypoint as a spotlight to help light your way. This pistol-grip light has a trigger-style switch, as well as an integrated stand so that you can set it down for scene lighting.

### Additional Features:

- Available in alkaline and rechargeable models
- Long-range targeting beam (alkaline: 625m; rechargeable: 678m) for making line inspections or looking for addresses
- 1 meter impact-resistance tested

#44900 - Waypoint (alkaline model) with 12V DC power cord - Yellow

#44902 - Waypoint (alkaline model) with 12V DC power cord - Black

#44910 - Waypoint (rechargeable model) with 120V AC - Yellow

#44911 - Waypoint (rechargeable model) with 120V AC - Black

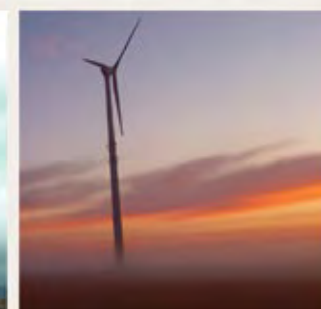
#44909 - 12V DC Cord (for rechargeable model)

PLANT OPERATIONS

TRANSMISSION & DISTRIBUTION

NATURAL GAS UTILITY

WIND ENERGY



# WIND ENERGY

## E-Flood®/E-Spot® LiteBox®



	E-Flood LiteBox		E-Spot LiteBox	
<b>Light Source</b>	Six C4® LEDs		Three C4® LEDs within three deep dish parabolic reflectors	
<b>Battery</b>	Sealed lead acid		Sealed lead acid	
<b>Case Material</b>	High-impact thermoplastic housing with rubberized impact bumper		High-impact thermoplastic housing with rubberized impact bumper	
	<b>HIGH</b>	<b>LOW</b>	<b>HIGH</b>	<b>LOW</b>
<b>LUMENS:</b>	615	330	540	330
<b>CANDELA:</b>	4,000	2,150	55,000	32,000
<b>DISTANCE:</b>	126m	93m	469m	358m
<b>RUN TIME:</b>	8 hrs	18 hrs	7 hrs	15 hrs
<b>Features</b>	Floodlight design; IPX4 water-resistant; push-button switch; cushioned grip handle		Spotlight design; IPX4 water-resistant; push-button switch; cushioned grip handle	

With these two lanterns, we offer a lighting option that will fit your needs. Choose the E-Spot LiteBox when you want to concentrate a bright beam on one spot, or pick the E-Flood LiteBox to flood an area with uniform light. Each light has a high and low setting to give you more light output or longer run times.

### Additional Features:

- High and low settings
- Swivel neck rotates over 90° to aim the beam where you need it

- #45821 - E-Flood LiteBox Standard System  
120V AC/12V DC - Yellow
- #45825 - E-Flood LiteBox Vehicle Mount System - Yellow
- #45875 - E-Spot LiteBox Standard System  
120V AC/12V DC - Yellow
- #45876 - E-Spot LiteBox Vehicle Mount System - Yellow
- #45845 - E-Spot Upgrade Kit
- #45842 - E-Flood Upgrade Kit



## HID LiteBox®

HID LiteBox	
<b>Light Source</b>	35 watt HID xenon lamp
<b>Battery</b>	Sealed lead acid
<b>Case Material</b>	High-impact thermoplastic housing with rubberized impact bumper
	<b>LUMENS:</b> 3,350
	<b>CANDELA:</b> 1,000,000
	<b>RUN TIME:</b> 1.75 hrs
<b>Features</b>	Deep-dish parabolic reflector produces a long range high intensity beam with optimum peripheral illumination

Working on a wind farm means you'll occasionally need a high-intensity light that will illuminate a large area. Our rechargeable HID LiteBox is just that light, providing one million candela peak beam intensity and revealing objects up to a mile away. This heavy-duty portable floodlight also has a 90° swivel neck, which is great for aiming the beam where you need it during field maintenance and inspections.

### Additional Features:

- Take the lantern from the office to the field and don't worry about battery power. A 12V DC power cord provides indefinite run time

- #45601 - HID LiteBox Standard System 120V AC/12V DC - Orange
- #45605 - HID LiteBox Vehicle Mount - Orange
- #45600 - HID LiteBox Without Charger - Orange



## Knucklehead®



Div 2	Flood Model	Spot Model
<b>Light Source</b>	Two C4® LEDs	C4® LED
<b>Battery</b>	Rechargeable NiCd; also accepts 4 "AA" alkaline batteries	Rechargeable NiCd; also accepts 4 "AA" alkaline batteries
<b>Case Material</b>	Nylon polymer	Nylon polymer
	<b>HIGH</b>	<b>LOW</b>
<b>LUMENS:</b>	200	63
<b>CANDELA:</b>	1,150	350
<b>DISTANCE:</b>	68m	37m
<b>RUN TIME:</b>	3.5 hrs	16 hrs
<b>Features</b>	Floodlight design; IPX4 water-resistant; safety rated.	Spotlight design; IPX4 water-resistant

Your work often requires you have both hands free. The Knucklehead flood model gives you a soft floodlight to work with while it hangs from a ladder with its convenient, stowable hook, or attaches to most metal surfaces with its magnet. If you distance lighting, the Knucklehead spot model provides a concentrated beam that reaches 210m. These lights even provide the flexibility of using either an economical rechargeable battery pack, or alkaline batteries when recharging is not convenient.

### Additional Features:

- Flood model: Dual LEDs within a wide reflector produce a smooth floodlight for up-close work
- Spot model: Single LED within a parabolic reflector provides a tighter beam for longer range target illumination
- Four modes: High beam for more brightness; low beam for longer run time; emergency flash for signaling; moonlight for low-level lighting and extended run time
- 360° rotating head articulates 210°
- Yellow model features stowable hook; orange models feature spring-loaded clip
- Safety rated: Class I & II, Div. 2
- Optional 4 "AA" battery carrier for fast battery replacement

### Flood Models

- #90627 - Knucklehead (with hook) AC/DC - Yellow
- #90642 - Knucklehead (with hook) Alkaline - Yellow
- #90657 - Knucklehead (with clip) AC/DC - Orange
- #90644 - Knucklehead (with clip) Alkaline - Orange

### Spot Models

- #90757 - Knucklehead (with clip) AC/DC - Orange
- #90744 - Knucklehead (with clip) Alkaline - Orange





## PolyTac® HP

PolyTac HP		
Light Source	C4® LED	
Battery	Two CR123A lithium batteries	
Case Material	High-impact, super-tough nylon polymer with a superior grip texture	
LUMENS: CANDELA: DISTANCE: RUN TIME:	HIGH	LOW
	275	14
	19,000	1,000
	275m	63m
	3 hrs	56 hrs
Features	IPX7 waterproof to 1m for 30 minutes	



## PolyTac®

PolyTac		
Light Source	C4® LED	
Battery	Two CR123A lithium batteries	
Case Material	High-impact, super-tough nylon polymer with a superior grip texture	
LUMENS: CANDELA: DISTANCE: RUN TIME:	HIGH	LOW
	275	14
	9,500	500
	195m	45m
	3 hrs	65 hrs
Features	IPX7 waterproof to 1m for 30 minutes; meets requirements of NFPA 1971-8.6 (2007)	



Superior beam distance capability in a durable, lightweight, compact package! It easily illuminates items at a distance so you can assess the equipment before climbing up.

### Additional Features:

- Deep reflector produces 275m beam
- TEN-TAP® Programming: Choice of three operating modes:
  - 1.) high/strobe/low (factory default); 2.) high only; 3.) low/high;
  - High for a super-bright, far-reaching beam
  - Low for when less light is needed and for longer run time
  - Strobe for disorienting or signaling
- Compact design - 5.9" (14.98 cm) fits conveniently in your tool bag
- Lightweight polymer construction won't weigh you down - 5.2 oz (148 grams)

- #88860 - PolyTac HP - Black
- #88863 - PolyTac HP - Yellow
- #99075 - Optional rubber helmet strap

A tough, durable flashlight can be indispensable when you're on the job. Whether you're working out in the elements, or trying to read schematics in dark places, the PolyTac is a good light to have. With a beam distance of 195 meters, it easily illuminates items from afar while providing enough peripheral light so you can see what's around you.

### Additional Features:

- TEN-TAP® Programming: Choice of three operating modes:
  - 1.) high/strobe/low (factory default); 2.) high only; 3.) low/high;
  - High for a super-bright, far-reaching beam
  - Low for when less light is needed and for longer run time
  - Strobe for disorienting or signaling
- Compact design - 5.34" (13.56 cm) fits conveniently in your tool bag
- Optional rubber helmet strap offers hands-free lighting

- #88850 - PolyTac - Black
- #88853 - PolyTac - Yellow
- #99075 - Optional rubber helmet strap

## PolyTac 90®



You can clip the versatile PolyTac 90 to your gear, hang it from a ladder, use it as a headlamp (with optional headstrap), or stand it on end and with its right-angle head, you can aim the beam where you need it. This is a super-bright light with a head-mounted, push-button switch that is easy to use with gloves. In addition, it uses lithium batteries, allowing performance in extreme temperatures.

### Additional Features:

- IPX7; waterproof to 1 meter for 30 minutes
- Integrated carabiner style D-ring
- Optional accessories: Gear Keeper, elastic headstrap

- #88831 - PolyTac 90 LED - Yellow
- #88833 - Optional Gear Keeper® accessory
- #14059 - Optional elastic headstrap

PolyTac 90		
Light Source	C4® LED	
Battery	Two CR123A lithium batteries	
Case Material	High-impact thermoplastic	
LUMENS: CANDELA: DISTANCE: RUN TIME:	HIGH	LOW
	170	17
	7,000	700
	167m	53m
	3.75 hrs	30 hrs
Features	90° head, D-ring or optional Gear Keeper attaches to harnesses, belts or other gear	

Wind Energy

PLANT OPERATIONS

TRANSMISSION & DISTRIBUTION

NATURAL GAS UTILITY

WIND ENERGY



# WIND ENERGY

## Div. 2 Headlamps

	Septor			Trident			Argo		
Light Source	Seven ultra-bright white LEDs			One C4® LED, three ultra-bright white LEDs			C4® LED		
Battery	Three "AAA" alkaline batteries			Three "AAA" alkaline batteries			Three "AAA" alkaline batteries		
Case Material	Impact resistant ABS thermoplastic			Impact resistant ABS thermoplastic			Impact resistant ABS thermoplastic		
	7 LEDs	3 LEDs	1 LED	C4 LED	3 LEDs	1 LED	HIGH	MEDIUM	LOW
LUMENS:	120	45	13	80	35	11	150	100	45
CANDELA:	900	375	100	4,000	385	120	9,250	6,375	2,750
DISTANCE:	60m	35m	20m	126m	39m	22m	190m	160m	103m
RUN TIME:	3.5 hrs	10 hrs	55 hrs	5 hrs	10 hrs	53 hrs	3 hrs	4.5 hrs	30 hrs
Features	Adjustable elastic head strap; rubber hard hat strap; battery level indicator; IPX4 water-resistant; 90° tilting head reduces neck fatigue			Adjustable elastic head strap; rubber hard hat strap; battery level indicator; IPX4 water-resistant; 90° tilting head reduces neck fatigue			Adjustable elastic head strap; rubber hard hat strap; battery level indicator; IPX4 water-resistant; 90° tilting head reduces neck fatigue		



### Septor® - Ideal for up-close lighting

When a job requires the use of both hands, the Septor is the headlight of choice. Specifically engineered to maximize run time, it offers 3 lighting modes (1, 3 or 7 LEDs) and a 90° tilting head so you can aim the light where you need it. Septor produces a soft flood light that is designed to minimize eye strain and is ideal for up-close work. Safety rated: Class I & II, Div. 2.

#61052 - Septor - Yellow

### Trident® - Ideal for distance and up-close lighting

The Trident is another option for when you're worried about juggling your tools and a flashlight. This headlamp's 90° tilting head can help reduce neck fatigue, while giving you the use of both hands when lifting, carrying and making repairs. It combines a single, distance oriented C4® LED with three ultra-bright high-intensity flood LEDs, giving you multiple lighting choices in a single headlamp. Safety rated: Class I & II, Div. 2.

#61050 - Trident - Yellow

### Argo® - Ideal for long-distance lighting

Whether you're climbing, making repairs, trouble shooting or carrying supplies, the last thing you want to worry about is carrying a flashlight. That's why a headlamp like the versatile Argo is a good choice. Three brightness levels give you the best lighting options to suit your needs: High for super-bright, far-reaching beam, medium for longer run times, low for extended run times. Safety rated: Class I & II, Div. 2.

#61301 - Argo - Yellow

## Double Clutch® USB



Double Clutch				
Light Source	C4® LED			
Battery	Lithium polymer; also accepts 3 AAA alkaline			
Case Material	Polymer construction			
	HIGH/SPOT	LOW/SPOT	HIGH/FLOOD	LOW/FLOOD
LUMENS:	125	30	125	30
CANDELA:	1,700	400	250	70
DISTANCE:	82m	40m	31	4m
RUN TIME:	3.5 hrs (DUAL) 6 hrs (AAA)	10 hrs (DUAL) 18 hrs (AAA)	3.5 hrs (DUAL) 6 hrs (AAA)	10 hrs (DUAL) 18 hrs (AAA)
Features	Dual fuel - multiple power sources; USB rechargeable; IPX4 water-resistant; 2m impact-resistance tested			



The Double Clutch USB gives you the flexibility of shifting between beams and modes to fit your task, as well as choosing your battery source. It is also easy to use, even with gloves – just a quick twist of the facecap turns the light on and off, or changes the output from spot to flood.

#### Additional Features:

- Dual-fuel: Powered by USB rechargeable lithium polymer battery; also accepts 3 AAA alkaline or lithium batteries as back-up
- Low-profile construction with optimized center of gravity provides maximum comfort and stability during use
- 60° tilting head reduces neck fatigue
- Includes USB cord, and adjustable elastic and hard hat straps; optional AC wall adapter available

- #61600 - Double Clutch USB - Yellow
- #61602 - Double Clutch 120V AC - Yellow
- #61607 - Double Clutch Alkaline - Yellow

## ProTac HL® Headlamp



ProTac HL Headlamp				
Light Source	C4® LED			
Battery	Two CR123A lithium batteries			
Case Material	Anodized, machined aluminum			
	HIGH	MEDIUM	LOW	
LUMENS:	635	105	20	
CANDELA:	8,500	1,450	280	
DISTANCE:	184m	76m	33m	
RUN TIME:	1.75 hrs	8 hrs	36 hrs	
Features	TEN-TAP® Programming; IPX4 water-resistant; 1m impact-resistance tested			



When your task requires both hands and a bright light with a wide, flood beam, reach for the ProTac HL Headlamp. It produces 635 lumens of a bright, wide flood light. With a 90° tilting head to aim the beam, you'll have maximum comfort and stability whether you're using the rubber hard hat strap or the adjustable elastic head strap.

#### Additional Features:

- TEN-TAP® Programming - user selectable programs: 1.) High/medium/low; 2.) High only; 3.) Low/medium/high
- High for super-bright light with far-reaching beam distance; Medium for bright light and longer run time; Low for when a less intense beam is ideal and for extended run time

- #61304 - ProTac HL Headlamp



## Stylus Pro® Series

	Stylus Pro	Stylus Pro Reach	Stylus Pro 360
Light Source	C4® LED	C4® LED	C4® LED
Battery	Two "AAA" alkaline batteries	Two "AAA" alkaline batteries	Two "AAA" alkaline batteries
Case Material	Anodized, machined aluminum	Anodized, machined aluminum with polyethylene coated flexible cable	Anodized, machined aluminum
LUMENS:	90	38	65
CANDELA:	860	825	430
DISTANCE:	58m	57m	41m
RUN TIME:	6.5 hrs	8 hrs	6.5 hrs
Features	Shock-proof; IPX4 water-resistant; nylon holster; pocket clip	Cable allows for 14" of reach; individually serialized; mounting magnet; pocket clip	High strength break away safety lanyard; IPX4 water-resistant; 1m impact-resistance tested; push-button tail switch



### Stylus Pro®

C4® LED technology gives this penlight a piercing bright beam. It fits in your pocket to make it handy for inspecting tight places, reading maintenance manuals and schematics, or doing paperwork on the job site.

#66118 - Stylus Pro

### Stylus Pro Reach®

Often, jobs require light in tight places where regular flashlights can't reach. In these instances, you want the Stylus Pro Reach, which features a flexible cable extension with a C4® LED on the end. You can bend the cable and set it on a flat surface for a compact work light, or inspect tight space, then hang it on the wall for hands-free use.

#66418 - Stylus Pro Reach

### Stylus Pro® 360

Compact penlight with a lantern feature (slide the bezel forward and stand it upright) that provides hands-free use of 360° of light. Small enough to fit in your pocket, it's convenient to take with you anywhere.

#66218 - Stylus Pro 360 with two AAA alkaline batteries, nylon holster and lanyard

## ClipMate® USB

ClipMate USB				
Light Source	C4® LED, 620-639nm Red LED			
Battery	Lithium polymer			
Case Material	Durable polymer			
	C4 LOW	C4 HIGH	RED LOW	RED HIGH
LUMENS:	10	70	.2	.5
CANDELA:	50	500	3	9
DISTANCE:	14m	44m	3m	6m
RUN TIME:	24 hrs	3.5 hrs	65 hrs	16 hrs
Features	USB rechargeable; IPX4 water-resistant; 1m impact-resistance tested			

A multi-function, USB rechargeable clip-on light that grabs onto pockets or hats for hands-free use. No need to worry about finding a cord to charge it, as it features a built-in USB charge tab.

#### Additional Features:

- Multiple modes:
  - C4 LED: High for bright, white light; Low for lower level lighting and longer run time
  - Red LED with high and low modes; preserves night vision
- Recharges from USB source or AC wall adapter
- LED is mounted at the end of a flexible cable so you can aim the beam where you need it

#61125 - ClipMate USB - Light only  
#61126 - Clipmate USB with 120V AC



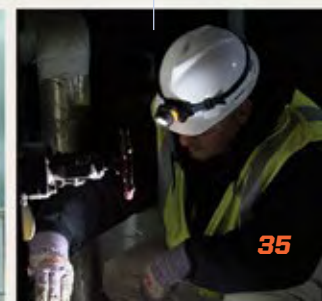
PLANT OPERATIONS

TRANSMISSION & DISTRIBUTION

NATURAL GAS UTILITY

WIND ENERGY

Wind Energy



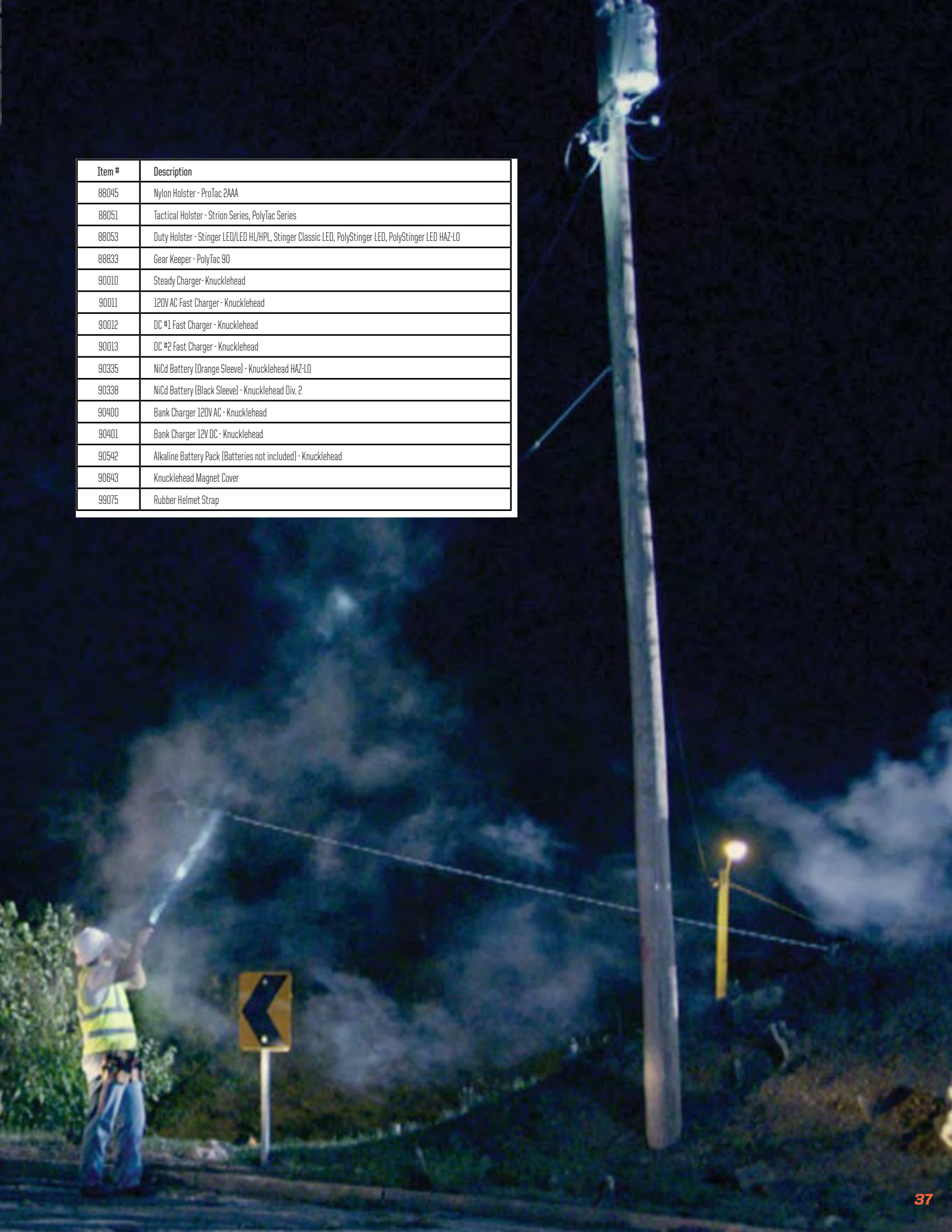
# ACCESSORIES

Item #	Description
14059	Elastic Headstrap - Coyote - PolyTac 90
21400	5 Unit Bank Charger 120V AC - SL-20LP
21401	5 Unit Bank Charger 12V DC - SL-20LP
22050	DC2 direct wire charge cord (All Rechargeables)
22051	DC1 Charge Cord (All Rechargeables)
22052	Charge Sleeve - SL-20LP (**Cord not included)
22056	12V DC power cord (10ft, 3 meters) - HID LiteBox
22057	USB Cord
22058	120V AC USB Wall Adapter
22060	IEC Type A AC Plug (100W/120V)
22063	Portable Scene Light Power Supply
22064	Portable Scene Light Cord with 120V AC Plug
22069	12V DC USB Plug
22070	USB Cord A to Micro (Custom)
22100	18650 Battery Charger
22101	18650 Battery
22311	120V AC charge cord
22911	Ring Holder - SL-20LP
25090	Nylon Holster - SL Series/3C ProPolymer Series
44050	Quick Release Strap - LiteBox Series/FireBox Series/Vulcan Series
44101	Charging Rack - Orange - Vulcan Series
44131	Direct Wire 12V DC Mounting Rack - Orange - Vulcan Series
44610	Li-Ion Battery - Fire Vulcan LED
44903	12V DC Power Cord - Waypoint (Alkaline model)
44908	Waypoint mount/holder (Alkaline model)
44909	120V AC Cord Waypoint (Rechargeable)/Super Siege
44918	Waypoint mount/holder (Rechargeable model)
44923	12V DC Cord - Waypoint Rechargeable/Super Siege
44942	Siege AA Magnetic Base - Coyote
45070	Standard System Mounting Rack - Orange - LiteBox Series/FireBox Series/HID LiteBox
45071	Direct Wire 12V DC Mounting Rack - Orange - LiteBox Series/FireBox Series/HID LiteBox
45232	Shoulder Strap - LiteBox Series/FireBox Series/HID LiteBox/Fire Vulcan LED
45630	Battery - HID LiteBox/E-Flood LiteBox HL/Portable Scene Light
45637	HID Bulb Kit
45638	HID Lens/reflector assembly
45657	HID Flood Lens
45842	E-Flood Upgrade Kit
45845	E-Spot Upgrade Kit
45937	Battery - E-Flood/E-Spot LiteBox/FireBox
61128	Lith Polymer Battery - ClipMate USB
61604	Lith Polymer Battery - Double Clutch USB
64030	"N" Cell batteries, 6 pack - 3N ProPolymer LED
65030	AAAA Batteries, 6 pack - Stylus
65031	Glare Guard - Stylus

Item #	Description
65905	Nylon Holster, Stylus
66028	Nylon Holster, Stylus Pro
66029	Nylon Holster, Stylus Pro USB
66143	Li-Ion Battery - Stylus Pro USB
68085	Helmet Mount - 4AA ProPolymer Series/3AA ProPolymer HAZ-LO/PolyTac
68088	Belt Clip - 3AA ProPolymer HAZ-LO/4AA ProPolymax
68089	Poly Mount - 2AA/3AA/4AA ProPolymer Series, PolyTac Series
68905	Nylon Holster - 4AA ProPolymax, PolyTac HP
71503	Nylon Holster - ProPolymer 2AA, Streamlight Jr. LED
71510	Magnetic Clip - Streamlight Jr. LED Series
72024	Lanyard with Push Button Slide
74059	Leather holster: Plain - Strion Series, ProTac HL
74060	Leather holster: Basketweave Pattern - Strion Series, ProTac HL
74102	Charger Holder (Cord not included) - Strion Series
74175	Li Ion Battery Stick - Strion Series, ProTac HL USB
74400	6-unit Bank Charger 120V AC - Strion Series
74401	6-unit Bank Charger 12V DC - Strion Series
75100	Steady Charger (Cord not included) - Stinger Series
75103	Fast Charger (Cord not included) - Stinger Series
75133	Leather holster: Plain - Stinger LED/PolyStinger LED Series
75134	Leather holster: Basketweave Pattern - Stinger LED/PolyStinger LED Series
75175	NiCd Battery Stick - Stinger Series except PolyStinger LED HAZ-LO
75176	Li-Ion Battery Stick - Stinger Series except PolyStinger LED HAZ-LO
75375	NiMH Battery Stick - Stinger Series except PolyStinger LED HAZ-LO
75400	5 Unit Bank Charger 120V AC - Stinger Series
75401	5 Unit Bank Fast Charger 120V AC - Stinger Series
75702	Anti-Roll Ring - Stinger LED/DS LED, Stinger Classic LED, Stinger Lite Pipe
75906	Ring Holder (All Stingers)
75927	Nylon Holster - Stinger LED/Stinger DS LED
75928	Loop holster - Stinger Series
75951	Stinger Lite Pipe Kit - converts xenon models to Stinger Lite Pipe
75967	Magnetic Mount - Stinger Series
76375	NiCd Battery Stick - PolyStinger LED HAZ-LO
76409	Lanyard - PolyStinger LED HAZ-LO
77175	NiCd Battery Stick - SL-20LP
77375	NiMH Battery Stick - SL-20LP
85175	Lithium batteries (2) Pack
85177	Lithium batteries (12) Pack
85179	Lithium batteries (400) Pack
85180	Lithium batteries (6) Pack
85905	Nylon holster - ProPolymer 2AA, PolyTac, Strion LED
85909	Nylon holster (Deluxe) - PolyTac
88036	Nylon Holster - ProTac 2L
88038	Nylon Holster - ProTac 2AA



Item #	Description
88045	Nylon Holster - ProTac 2AAA
88051	Tactical Holster - Strion Series, PolyTac Series
88053	Duty Holster - Stinger LED/LED HL/HPL, Stinger Classic LED, PolyStinger LED, PolyStinger LED HAZ-LO
88833	Gear Keeper - PolyTac 90
90010	Steady Charger - Knucklehead
90011	120V AC Fast Charger - Knucklehead
90012	DC #1 Fast Charger - Knucklehead
90013	DC #2 Fast Charger - Knucklehead
90335	NiCd Battery (Orange Sleeve) - Knucklehead HAZ-LO
90338	NiCd Battery (Black Sleeve) - Knucklehead Div. 2
90400	Bank Charger 120V AC - Knucklehead
90401	Bank Charger 12V DC - Knucklehead
90542	Alkaline Battery Pack (Batteries not included) - Knucklehead
90643	Knucklehead Magnet Cover
99075	Rubber Helmet Strap







## Personalize Your Lights

Make your Streamlight flashlights a little more personal! We offer custom engraving for our products. Whether it's a for safety award, to celebrate a corporate event, show appreciation to an employee or just display your logo, we can personalize your flashlights to suit your needs. Here are a few engraving suggestions:

- Annual Safety Award
- Employee Appreciation
- Website
- Company Logo
- Department
- Address
- Corporate Event
- Departmental Patch
- Phone number



## Streamlight's Imprinting Department

If you have artwork ready to go, our Imprinting Department will work with you to fit the design to your flashlight of choice. We can also customize an imprint for you with one of the following fonts:

**Amerigo Bold**      **Futura Lite**  
**Brush Script Regular**      **Swiss 721 Roman**





## FAQs

- Which Streamlight flashlights can be engraved?  
 - Most of Streamlight's aluminum flashlights can be laser engraved.
- How large will the engraved image be?  
 - It depends upon the dimensions of the engravable area of each light (noted on imprint guides).
- Where on the flashlight will the engraving appear?  
 - The location of the engraving depends upon which light is being personalized.
- How long will it take to get my order?  
 - Please allow up to an additional 1-2 week lead time for most orders. For larger orders call for a lead time estimate.
- What file format do you require for supplied artwork?  
 - Supplied artwork format must be a black and white bitmap (.bmp) file.

## How to Order

To have your product engraved, note "Custom Imprinting" on your order form and include your camera-ready artwork (.bmp file) or use one of our typefaces. A Customer Service Representative (CSR) will contact you and send an engraving order form for your approval and signature.

Engraving fees and minimum order requirements apply. Consult with your CSR to determine price and lead time.

		30 DOLEHLE ROAD - DALEVILLE, PA 19402 PHONE: 610-631-0600 FAX: 610-631-0712	Customer Approval
Date: _____ Company: _____ Attention: _____ Sales Order # _____ SIC: _____		* Approved fonts: (check one if artwork is unavailable) <input type="checkbox"/> Amerigo Bold <input type="checkbox"/> Futura Lite <input type="checkbox"/> Brush Script Regular <input type="checkbox"/> Swiss 721 Roman	
- ARTWORK FOR LOGOS SHOULD BE SUBMITTED AS EPS FILES OR: • ILLUSTRATOR FILES (NO JPEG), DXF, DWG AND IGES FOR HOT STAMP AND PAD PRINTING. • BMP AND JPEG FOR LASER ENGRAVING (PREFERRED). BLACK AND WHITE CAMERA READY ARTWORK IS ALSO ACCEPTABLE. IF THE PROPER FILE FORMAT IS NOT SUPPLIED, EXTRA CHARGES MAY BE INCURRED. - ACTUAL SIZE OF IMPRINT MAY VARY, AS NECESSARY, FROM ARTWORK.			
***Your imprint order is ON HOLD pending approval of this layout.***			
<input type="checkbox"/> The undersigned acknowledges the exclusive right, title and interest in and to the proposed engraving artwork and/or image free of any encumbrance or third party restriction and hereby authorizes and indemnifies the use of the same. Streamlight, Inc. reserves the right to cancel this request at any time if it determines said authority not valid for any reason.			
Approved By: _____		Date: _____	
<b>IMPRINT GUIDE - STYLUS PRO</b> - IMPRINT BY LASER ENGRAVING ONLY.			
			
			
			

## Contact Information

Contact us today for more information!

Phone: (800) 523-7488 / +1 (610) 631-0600

Fax: (800) 220-7007 / +1 (610) 631-0712

cs@streamlight.com





# STREAMLIGHT®

Streamlight, Inc.  
30 Eagleville Road  
Eagleville, PA 19403-3996  
www.streamlight.com

(800) 523-7488 Toll-Free  
(800) 220-7007 Fax  
(610) 631-0600  
(610) 631-0712 Fax

©Streamlight, Inc. 2016 4/16

ISO 9001:2008 certified

asi/89871

991139 Rev. B

All rights reserved. Trademarks of companies mentioned herein appear for identification purposes only and are the property of their respective companies.

