

CUPS, CONES & PLUGS FOR METAL FABRICATION



NEW: TIGER AO CUPS, CONES AND PLUGS

These products deliver the right combination of performance and value. Aluminum oxide grains in combination with a strong bond deliver long product life and a consistent cut-rate for grinding metal. Whether you are in a fab shop, foundry, or shipyard you can count on Tiger AO to get the job done fast and done right.

TYPE 11 CUPS FOR RIGHT ANGLE GRINDERS

BEST ON: Carbon steel, stainless steel, cast iron and ductile iron.

Features:

- **Precision balanced** to ensure smooth vibration free operation and reduced operator fatigue
- **Zinc plated nut** prevents oxidation, eliminating contamination and allowing for easy mounting
- **Unique anchored safety nut** locks the nut in place to increase safety and prevent product breakage

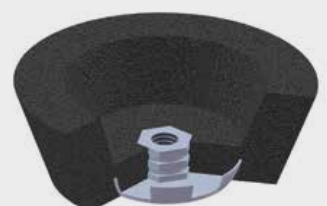
Application:

Ideal for heavy metal removal, grinding, transitioning, rough beveling and removing cracks/flaws

ANCHORED NUT INCREASES SAFETY

4" & 5"

6"



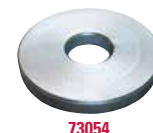
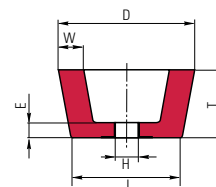
P

PERFORMANCE GRINDING

TIGER AO / Long Life

Diameter (D / J)	Thickness (T)	Arbor (H)	Rim (W)	Back (E)	Grade	Max. RPM	Std. Pack	Item #
4" / 3"	2"	5/8"-11	3/4"	3/4"	A16Q	9,070	5	68350
5" / 3-3/4"	2"	5/8"-11	1"	3/4"	A16Q	7,260	5	68353
6" / 4-3/4"	2"	5/8"-11	1"	3/4"	A16Q	6,000	5	68356
6" / 4-3/4"	2"	5/8"-11	1-1/2"	3/4"	A16Q	6,000	5	68359

*Reinforced metal back



FLARING CUP WHEEL MOUNTING FLANGE - Fits over 5/8"-11 spindles

Diameter	Thickness	Std. Pack	Item #
2"	1/4"	1	73054

CONES AND PLUGS

FOR STRAIGHT & DIE GRINDERS



BEST ON: Carbon steel, stainless steel, cast iron and ductile iron.

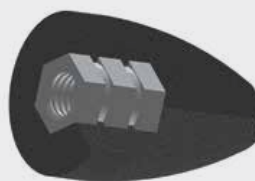
Features:

- **Open face design** provides aggressive cut-rate right out of the box
- **Anchored hexagon nut** secures the abrasive to the tool to increase safety and prevent product breakage
- **Zinc plated nut** prevents oxidation, eliminating contamination and allowing for easy mounting
- **Precision balanced** to ensure smooth, vibration free operation and reduced operator fatigue

Application:

Ideal for ID cleaning, hole edge beveling, smoothing weld seams, removing gates and parting lines and cleaning castings in hard-to-reach places

ANCHORED NUT INCREASES SAFETY

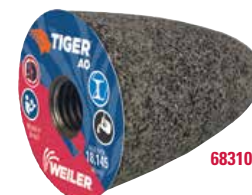
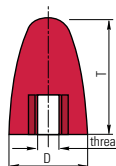


TYPE 16 CONES

P PERFORMANCE GRINDING

TIGER AO / Long Life

Diameter (D)	Thickness (T)	Arbor (Thread)	Grade	Max. RPM	Std. Pack	Item #
1"	3"	3/8"-24 Nut	A24R	36,290	12	68300
1-1/2"	2-1/2"	3/8"-24 Nut	A24R	24,190	12	68302
1-1/2"	2-1/2"	5/8"-11 Nut	A24R	24,190	12	68303
1-1/2"	3"	3/8"-24 Nut	A24R	24,190	12	68305
1-1/2"	3"	5/8"-11 Nut	A24R	24,190	12	68307
2"	3"	3/8"-24 Nut	A24R	18,145	12	68309
2"	3"	5/8"-11 Nut	A24R	18,145	12	68310
2-3/4"	3"	5/8"-11 Nut	A24R	13,195	12	68312
3"	3"	5/8"-11 Nut	A24R	12,100	12	68314

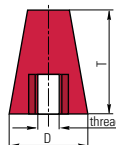


TYPE 17 CONES

P PERFORMANCE GRINDING

TIGER AO / Long Life

Diameter (D)	Thickness (T)	Arbor (Thread)	Grade	Max. RPM	Std. Pack	Item #
1-1/2"	3"	3/8"-24 Nut	A24R	24,190	12	68315
1-3/4"	3"	5/8"-11 Nut	A24R	20,740	12	68316
2"	3"	5/8"-11 Nut	A24R	18,145	12	68317

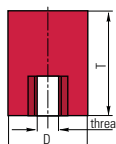


TYPE 18 PLUGS

P PERFORMANCE GRINDING

TIGER AO / Long Life

Diameter (D)	Thickness (T)	Arbor (Thread)	Grade	Max. RPM	Std. Pack	Item #
1-1/2"	2-1/2"	3/8"-24 Nut	A24R	24,190	12	68318
1-1/2"	2-1/2"	5/8"-11 Nut	A24R	24,190	12	68319
1-1/2"	3"	5/8"-11 Nut	A24R	24,190	12	68321
2"	3"	5/8"-11 Nut	A24R	18,145	12	68323

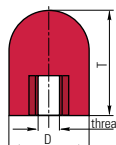


TYPE 18R PLUGS

P PERFORMANCE GRINDING

TIGER AO / Long Life

Diameter (D)	Thickness (T)	Arbor (Thread)	Grade	Max. RPM	Std. Pack	Item #
1-1/2"	3"	3/8"-24 Nut	A24R	24,190	12	68325
1-1/2"	3"	5/8"-11 Nut	A24R	24,190	12	68327
2"	3"	5/8"-11 Nut	A24R	18,145	12	68329
3"	3"	5/8"-11 Nut	A24R	12,100	12	68331



Key:

P PERFORMANCE LINE
Industrial Grade

800.835.9999 / weilerabrasives.com



WC2056 / 4212BP / ©2021 Weiler Abrasives Group. All Rights Reserved.