

Replacement Washers

Feature:

- for use with 520-H series female internally expanded permanent couplings on pages 444 and 445



Size	Buna	
	Part #	Price/E
3/4"	H5071-BU	\$1.20
1"	H5072-BU	1.20
1 1/4"	H5073-BU	1.20
1 1/2"	H5074-BU	1.20
2"	H5075-BU	1.30
2 1/2"	H5076-BU	1.30
3"	H5077-BU	1.35
4"	H5078-BU	1.80

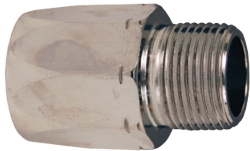
Permanent Couplings for Pump Hose

Application:

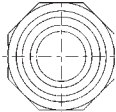
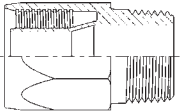
- economical and trouble-free couplings for gas pump hose

Features:

- serrations on the stem imbed in the hose eliminating wicking and leakage
- shell extends beyond the stem preventing cutting of interior walls; tapered ends of stem and shell protect hose when flexed
- provide tamper-proof static connection which cannot be broken without completely damaging coupling and hose
- internal expansion of stem to nominal ID of hose provides full flow
- broad, firm grip of coupling extends hose life by making it possible for hose to withstand more flexings
- Hand and electrically operated installation equipment is available; consult Dixon™ for pricing and availability.
- Underwriters Listed approved
- *Reattach static wire if required.*



M



Hose ID	Male NPT	Hose OD	Chrome Plated Brass	
			Part #	Price/E
5/8"	3/4"	1"	H5741	\$15.15
5/8"	3/4"	1-1/32"	H5742	15.15
3/4"	3/4"	1-9/64"	H5751	17.60
3/4"	3/4"	1-11/64"	H5752	17.60
3/4"	3/4"	1-13/64"	H5753	27.10
3/4"	3/4"	1-7/32"	H5754	27.10
3/4"	3/4"	1-17/64"	H5755 ¹	27.10
1"	1"	1-25/64"	H5771	32.00
1"	1"	1-29/64"	H5772	32.00
1"	1"	1-1/2"	H5773	32.00
1"	1"	1-9/16"	H5774	32.00

¹ thrust plate required **2500HTL15**

HB Coupling Expander Machine



Features:

- hand operated, pull-through type expander
- for use in a fixed location for small production runs or as a portable repair type expander
- attaches sizes 3/4" through 2" of the 520-H Series couplings, and all sizes of 570-H and 580-H Series couplings
- expander tooling sold separately

Part #	Price/E
2500HB0000	\$3180.00